

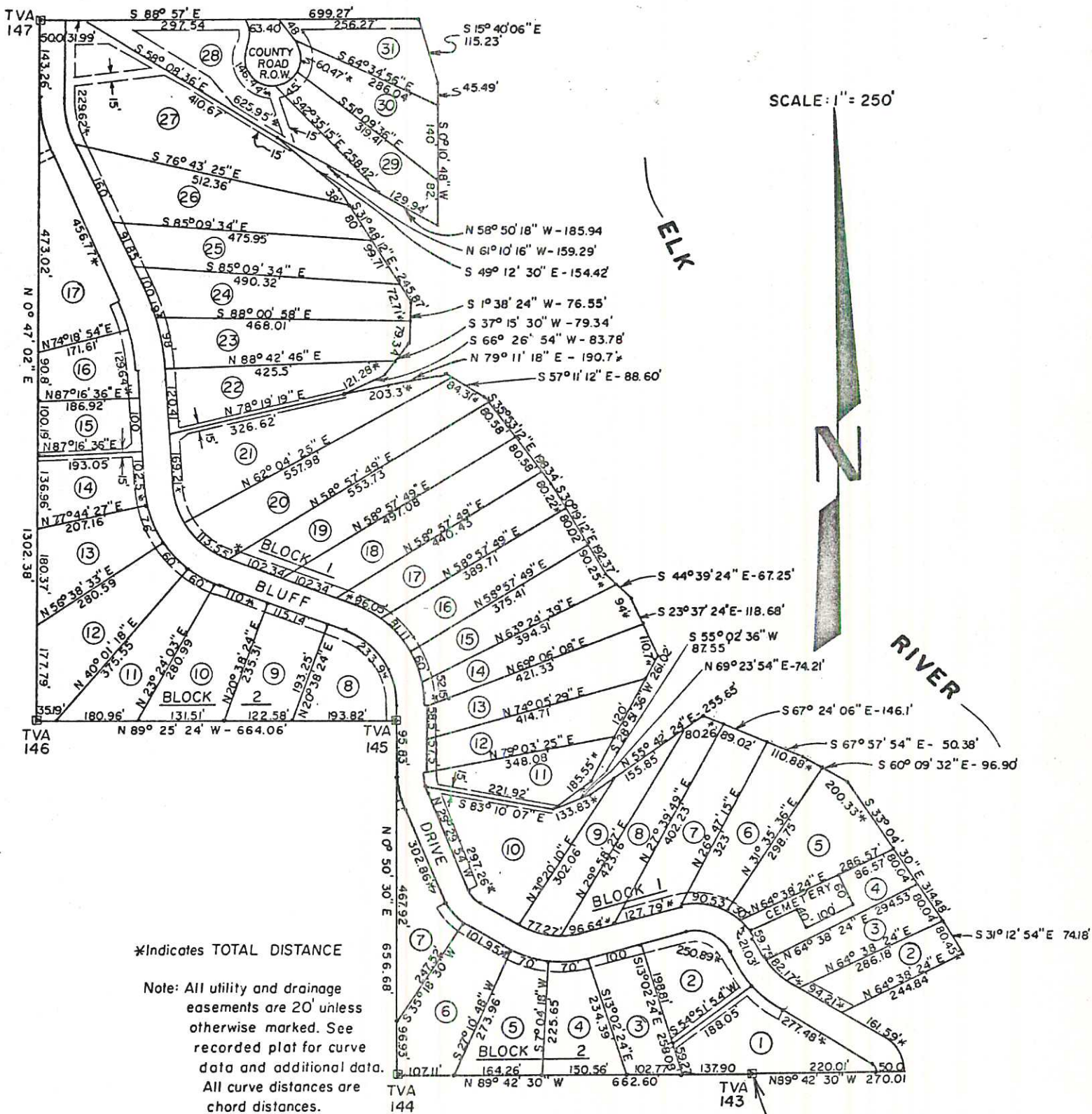
NOTE: This plat is provided as an aid to Title Examination and is not an exact copy of record plat.

LAUDERDALE ABSTRACT COMPANY

* Indicates TOTAL DISTANCE

This point is the northwest corner of the southeast 1/4 of the southeast 1/4 of the southwest 1/4 of Section 21, Township 3 South, Range 7 West.

Plat showing, at reduced scale, a schematic drawing of TWIN RIVERS ESTATES THIRD ADDITION, according to the plat thereof recorded in the office of the Judge of Probate of Lauderdale County, Alabama, in Plat Book 5, Page 6.



*Indicates TOTAL DISTANCE

Note: All utility and drainage easements are 20' unless otherwise marked. See recorded plat for curve data and additional data. All curve distances are chord distances.

This point is the Northwest corner of the Southeast 1/4 of the Southeast 1/4 of the Southwest 1/4 of Section 21, Township 3 South, Range 7 West.

Plat showing, at reduced scale, A RE-SUBDIVISION OF LOTS 2 THRU 19 BLOCK 1 and ALL OF BLOCK 2 of TWIN RIVERS ESTATES THIRD ADDITION, according to the plat thereof recorded in the office of the Judge of Probate of Lauderdale County, Alabama, in Plat Book 5, Page 9.

NOTE: This plat is provided as an aid to title examination and is not an exact copy of record plat.

LAUDERDALE ABSTRACT COMPANY