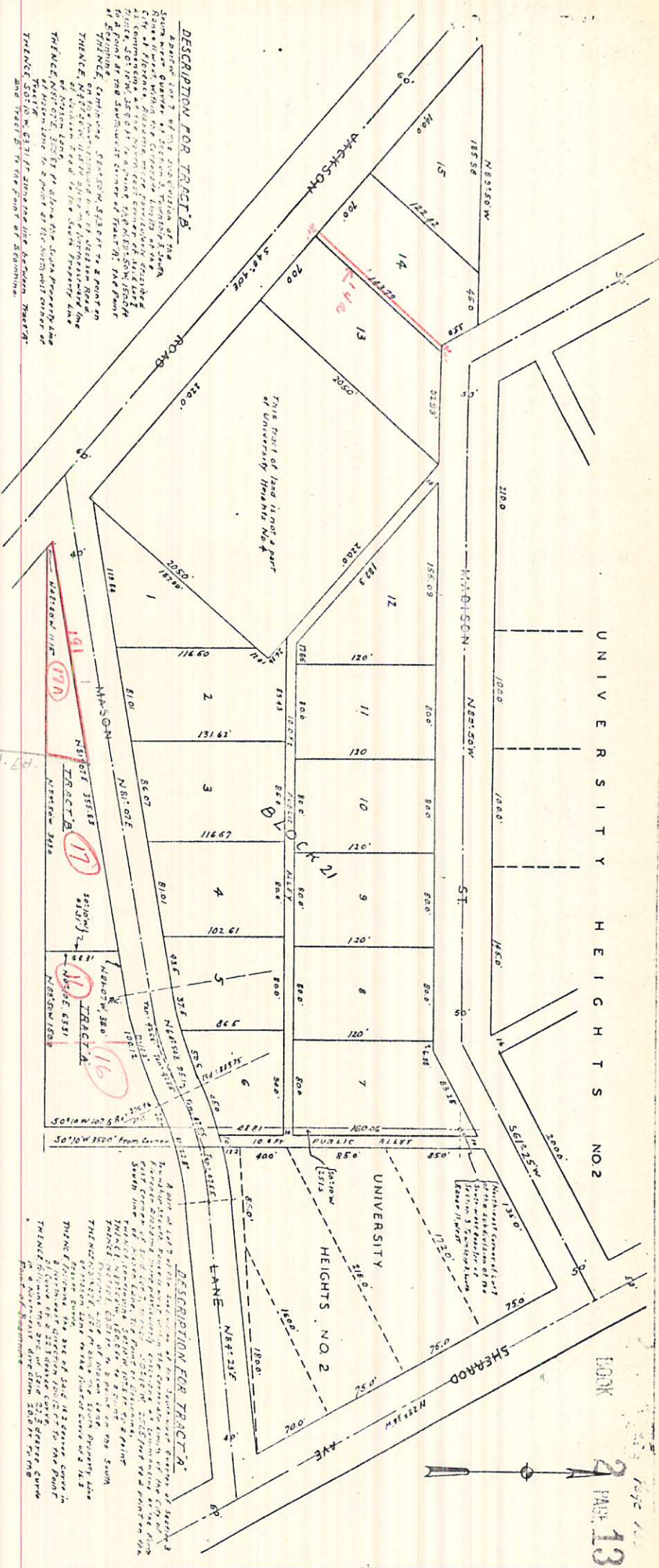


UNIVERSITY HEIGHTS NO. 2



DESCRIPTION FOR TRACT A

DESCRIPTION FOR TRACT B

Approx. lot 7 of the University Heights No. 2 Subdivision... This part of land is a part of University Heights No. 2

STATE OF ALABAMA COUNTY OF LAUDERDALE CITY OF FLORENCE... The undersigned S. B. Howard, Clerk for the City of Florence, Alabama, hereby certifies that the subdivision was approved by the City of Florence Board of Commissioners on September 27, 1928

STATE OF ALABAMA COUNTY OF LAUDERDALE... The undersigned S. B. Howard, Clerk of the property shown herein and designated as University Heights No. 2, hereby certifies that the subdivision was approved by the City of Florence Board of Commissioners on September 27, 1928

STATE OF ALABAMA COUNTY OF LAUDERDALE... The undersigned Herman K. Longshore, Judge of Probate in and for said County in and for said County hereby certifies that the subdivision was approved by the City of Florence on September 27, 1928

STATE OF ALABAMA COUNTY OF LAUDERDALE... The undersigned S. B. Howard, Clerk of the property shown herein and designated as University Heights No. 2, hereby certifies that the subdivision was approved by the City of Florence Board of Commissioners on September 27, 1928

STATE OF ALABAMA COUNTY OF LAUDERDALE... The undersigned Harry Evans, a registered Civil Engineer in and for said County, hereby certifies that the subdivision was approved by the City of Florence Board of Commissioners on September 27, 1928

RESUBDIVISION OF UNIVERSITY HEIGHTS NO. 4 PART OF LOTS 6 AND 7 OF THE SOUTH-WEST QUARTER OF SECTION 3, TOWNSHIP 3 SOUTH, RANGE 12 WEST, LAUDERDALE COUNTY, ALABAMA OWNED BY Mrs. Sue Rogers King Florence, Alabama

STATE OF ALABAMA COUNTY OF LAUDERDALE... The undersigned Harry Evans, a registered Civil Engineer in and for said County, hereby certifies that the subdivision was approved by the City of Florence Board of Commissioners on September 27, 1928

MAPS, Incorporated

Microfilming, Engineering, Drafting, Printing, etc.

My Commission expires...

T.J. FLOYD ENGINEER CO. FLORENCE, ALA.

Plat showing, at reduced scale, RE-SUBDIVISION OF UNIVERSITY HEIGHTS NO. 4, in the City of Florence, Alabama, according to the plat thereof recorded in the Office of the Judge of Probate of Lauderdale County, Alabama, in Plat Book 2, Page 135.

THIS TRACT OF LAND IS NOT A PART OF UNIVERSITY HEIGHTS NO. 4

MADISON N 89° 50' W

STREET

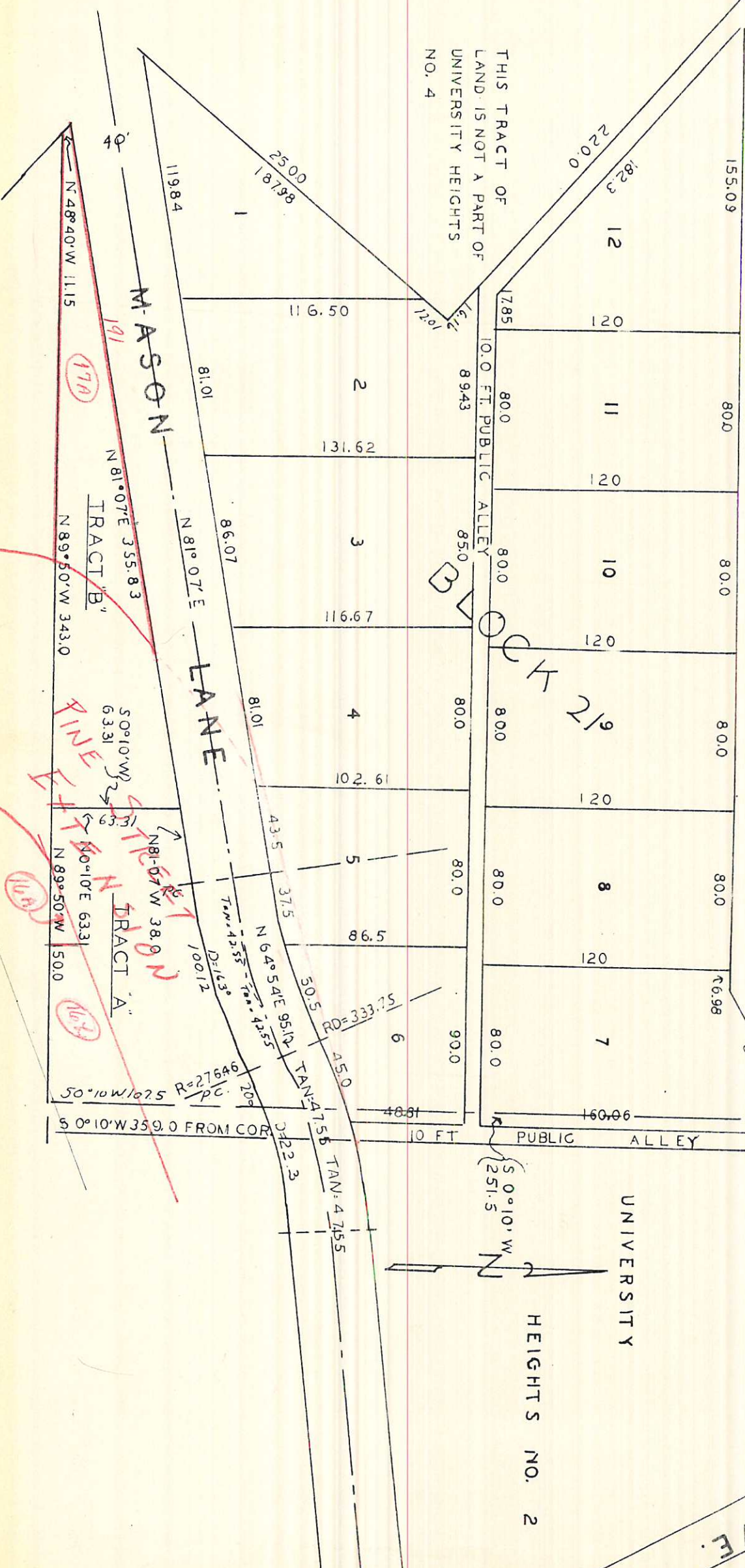
S 61° 25' W

N E COR OF LOT 7 OF THE SUBDIVISION OF THE SW/4 QUARTER OF SEC. 3, T. 1 R. 11 W.

SHERROD AVE.

UNIVERSITY

HEIGHTS NO. 2



TRACT "A"

TRACT "B"

MASON LANE

10.0 FT. PUBLIC ALLEY

10 FT. PUBLIC ALLEY

S 0° 10' W 251.5

HEIGHTS NO. 2

TRACT "A"

TRACT "B"

MASON LANE

10.0 FT. PUBLIC ALLEY

10 FT. PUBLIC ALLEY

S 0° 10' W 251.5

HEIGHTS NO. 2

