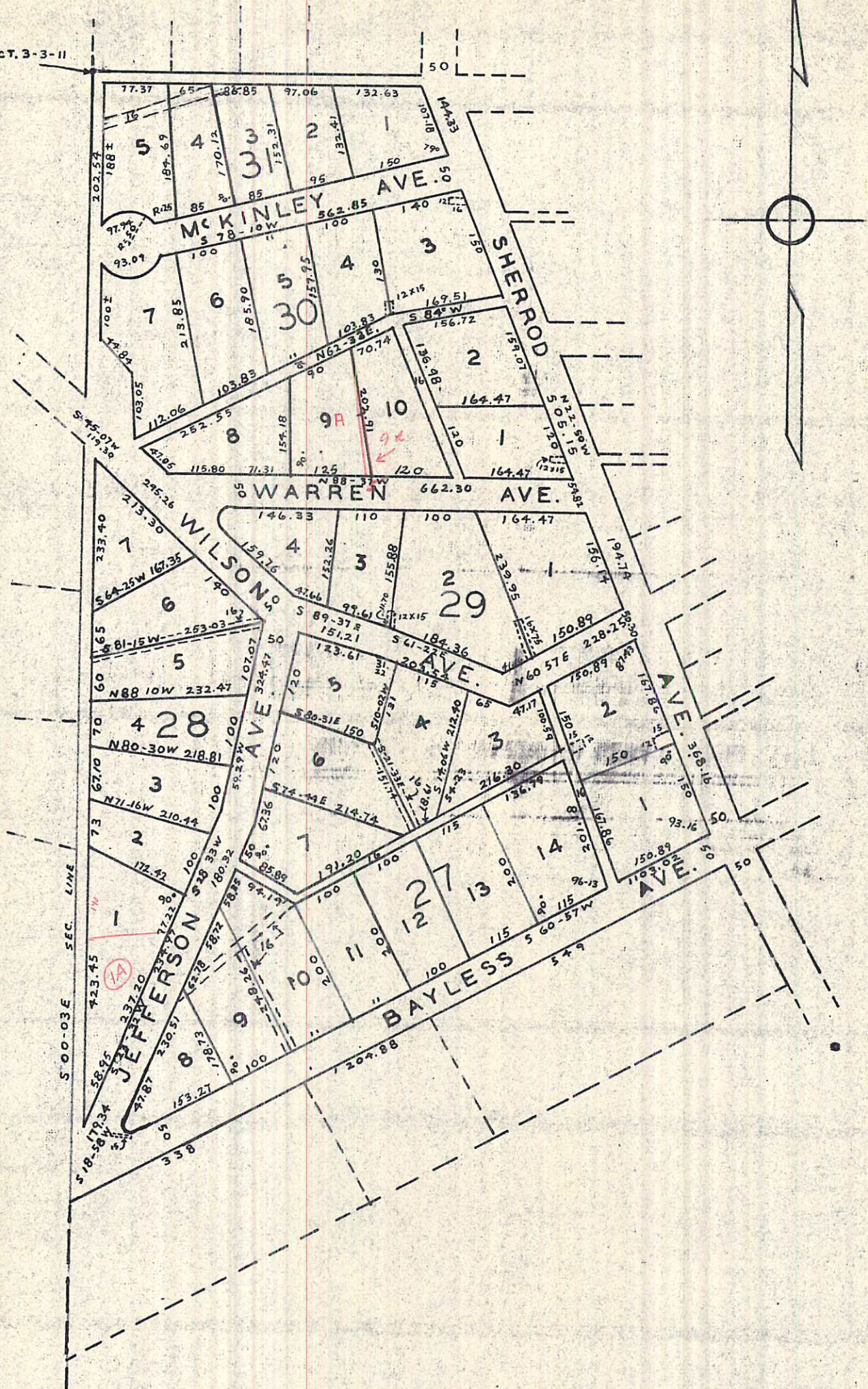


Plat showing, at reduced scale, UNIVERSITY HEIGHTS NO. 5-B, according to the plat thereof as recorded in the office of the Judge of Probate of Lauderdale County, Alabama in New Plat Book No. 2, at Page 169.

NW COR. SECT. 3-3-11



Plat showing, at reduced scale, UNIVERSITY HEIGHTS NO. 5-B, according to the plat thereof as recorded in the office of the Judge of Probate of Lauderdale County, Alabama in New Plat Book No. 2, at Page 169.