

State of Alabama
 Lauderdale County
 I, the undersigned, W.M. Paxton, a Civil Engineer of Florence Ala, hereby certify that the plat herewith is a true and correct resubdivision of Block 839 to 849 well in N.W. 1/4 of Sec 3, 3 1/2 in Lauderdale Co., Ala. and that said plat shows a correct 1/4 to said Section Florence Ala, this the 21st day of July 1936
 W.M. Paxton
 Civil Engineer

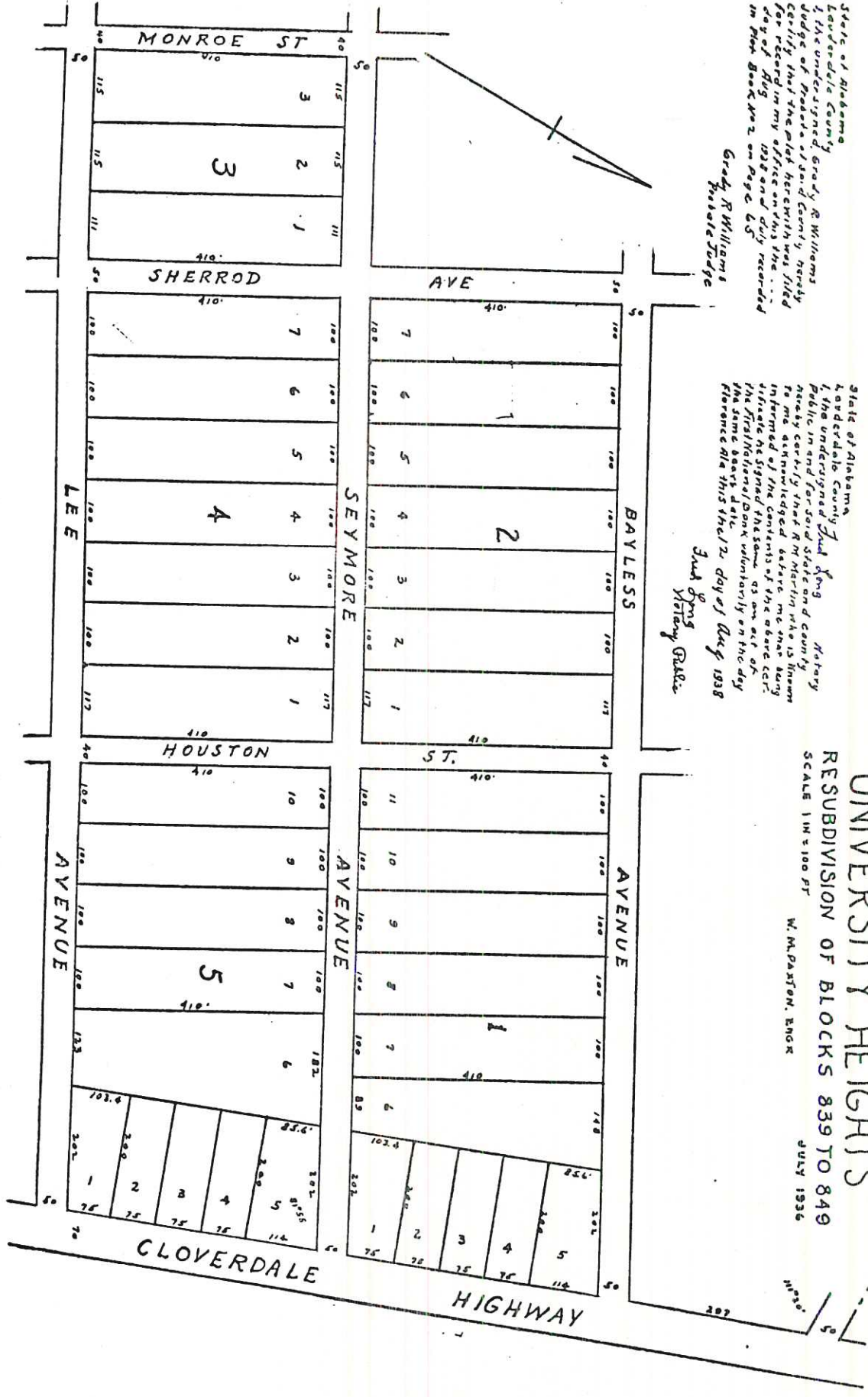
State of Alabama
 Lauderdale County
 I, the undersigned, R.M. Martin, President of First National Bank of Florence Ala, hereby certify that the property shown as subdivided on the plat herewith, hereby accepted and division for an official record of same Florence Ala, this the 12 day of Aug. 1938
 R.M. Martin
 President
 J.C. Hester
 Trust Officer

State of Alabama
 Lauderdale County
 I, the undersigned, Grady R. Williams, Judge of Probate of said County, hereby certify that the plat herewith was filed for record in my office on this, the 12 day of Aug. 1938 and duly recorded in Plat Book No. 2 on Page 65
 Grady R. Williams
 Probate Judge

State of Alabama
 Lauderdale County
 I, the undersigned, Jack King, Notary Public in and for said State and County, hereby certify that R.M. Martin who is known to me acknowledged before me that being informed of the contents of the above certificate assigned the same to an act of the First National Bank voluntarily on the day Florence Ala, this the 12 day of Aug. 1938
 Jack King
 Notary Public

110
 MAPS, Incorporated
 1109 North 12th Street
 Birmingham, Alabama
 Microfilming
 Engineering
 Surveying
 Blotting
 Plot Service
 Ownership Books
 Aerial Photography
 Tax Maps
 County Recording
 Printing

UNIVERSITY HEIGHTS
 RESUBDIVISION OF BLOCKS 839 TO 849
 SCALE 1" = 100 FT
 W. M. PAXTON, ENGR
 JULY 1936



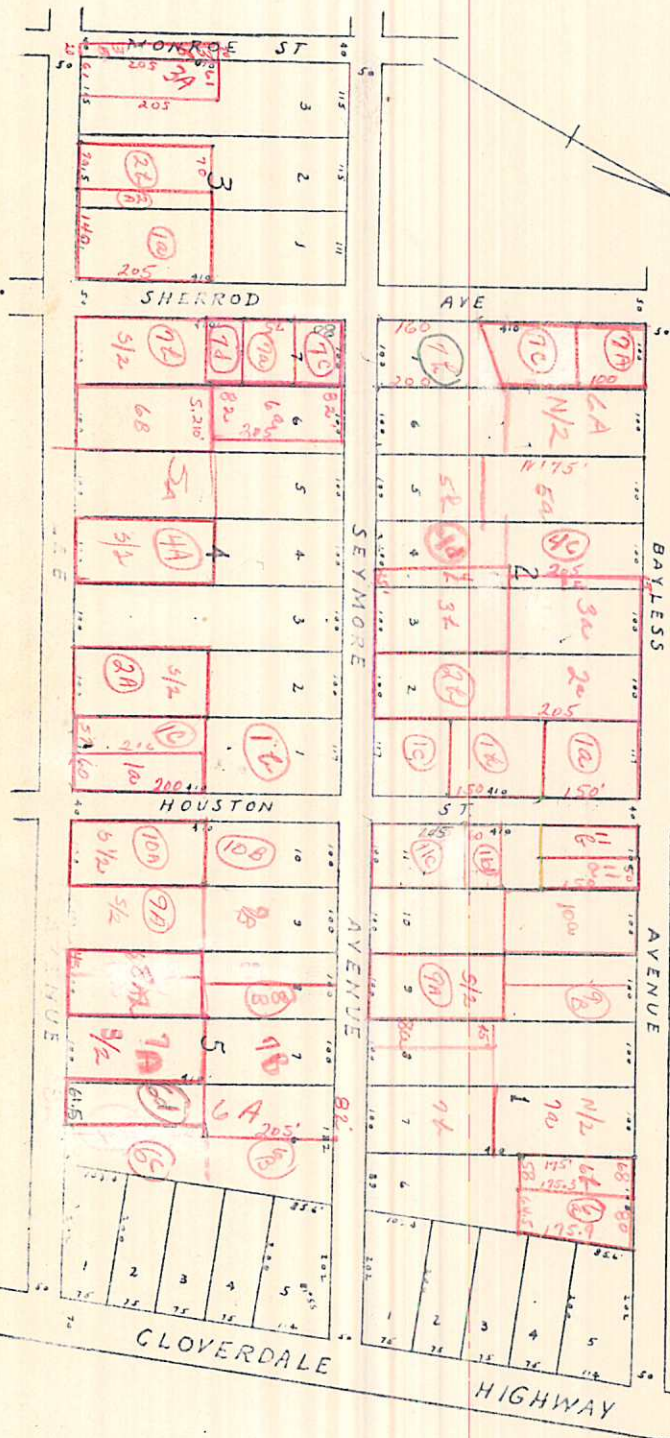
3268 ft E of NW Cor
 Sec 8-3-11

State of Alabama
 Lauderdale County
 I, the undersigned, W. M. Paston, Civil
 Engineer of said county, hereby certify
 that the plat hereon is a true and
 correct copy of the original filed in
 my office on the 12th day of July, 1936
 in Book No. 2 on Page 65.
 W. M. Paston
 Civil Engineer

State of Alabama
 Lauderdale County
 I, the undersigned, G. W. Williams,
 Judge of the Probate Court of said
 county, hereby certify that the plat
 hereon is a true and correct copy
 of the original filed in my office
 on the 12th day of July, 1936
 in Book No. 2 on Page 65.
 G. W. Williams
 Probate Judge

State of Alabama
 Lauderdale County
 I, the undersigned, G. M. Martin, President of
 the Board of Commissioners of said
 county, hereby certify that the plat
 hereon is a true and correct copy
 of the original filed in my office
 on the 12th day of July, 1936
 in Book No. 2 on Page 65.
 G. M. Martin
 President

State of Alabama
 Lauderdale County
 I, the undersigned, J. H. King, Attorney
 at Law, hereby certify that the plat
 hereon is a true and correct copy
 of the original filed in my office
 on the 12th day of July, 1936
 in Book No. 2 on Page 65.
 J. H. King
 Attorney at Law



UNIVERSITY HEIGHTS
 RESUBDIVISION OF BLOCKS 839 TO 849
 SCALE 1 IN = 100 FT. W. M. PASTON, ENGR
 JULY 1936

MAPS, Incorporated
 1100 North 20th Street
 Birmingham 1, Alabama
 Metrolithing
 Engineering
 Surveying
 Blotting
 Printing
 Plans
 Duplicating
 Aerial Photography
 Tax Maps
 Surveying
 Printing