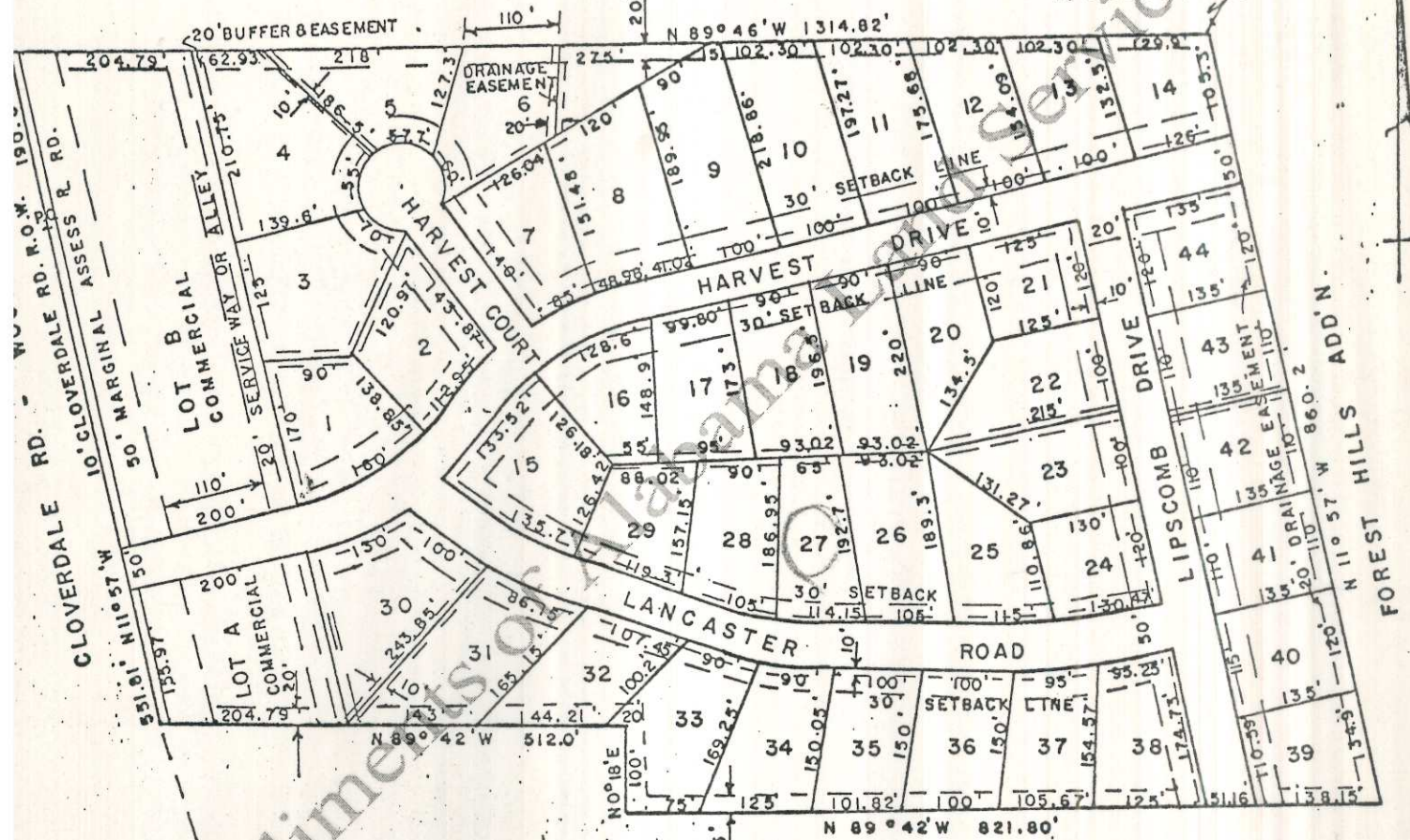
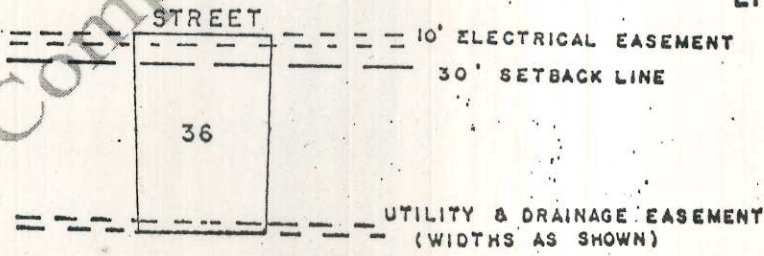


THIS POINT 1265.36' W &
1144.63' N OF S.E. COR.N.W.
1/4 SEC. 27, T29, R. 11 W.



LINSEY ESTATE



NOTE: FOR INTERIOR LOT ANGLES
& CURVE DATA SEE
RECORDED PLAT.

Plat showing at reduced scale VESTAVIA GARDENS, according to the plat thereof as recorded in the Office of the Judge of Probate of Lauderdale County, Alabama, in Plat Book 4, page 85.