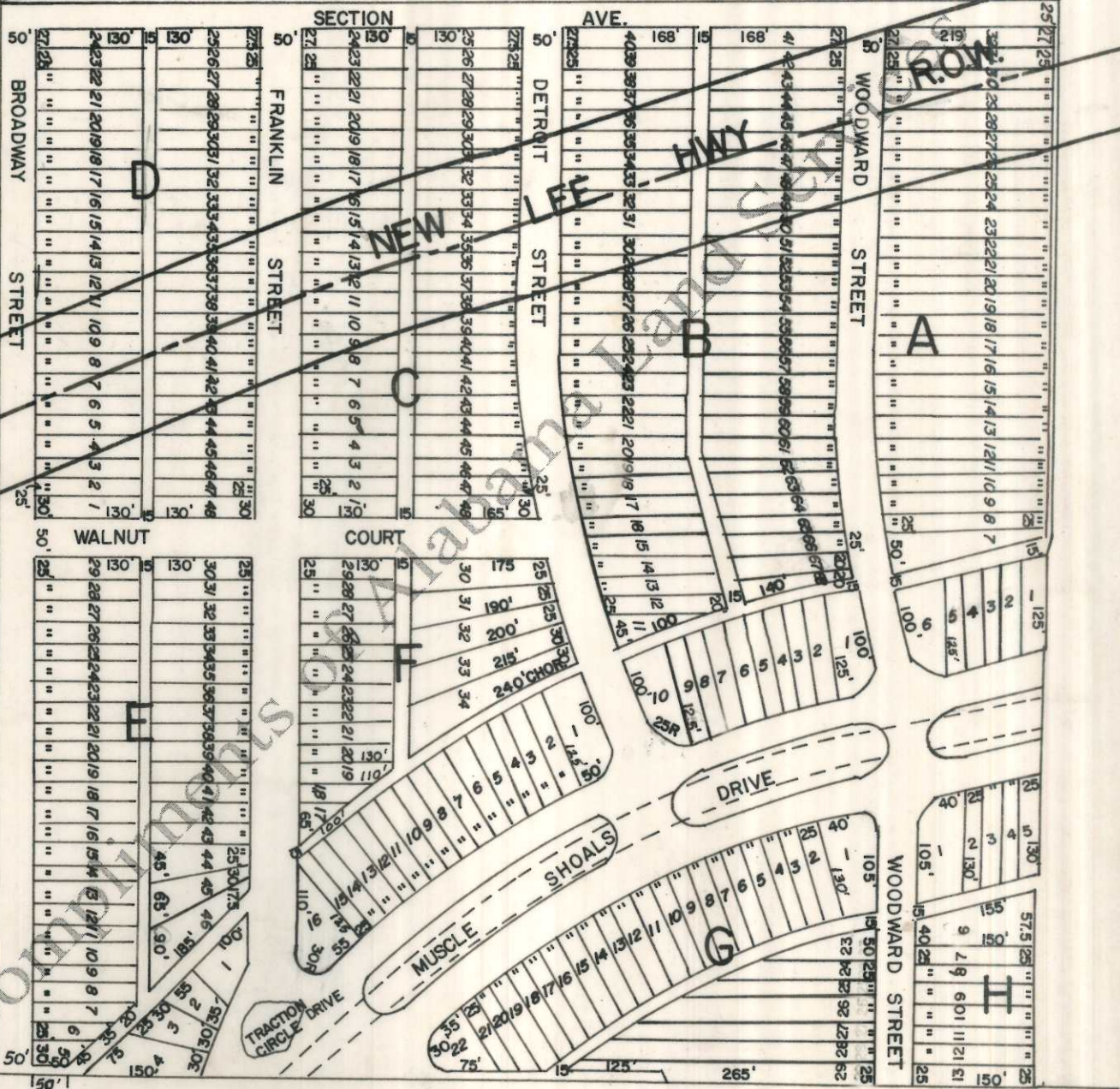


N.W. corner Sec. 6, Twp. 3, Rn. 10W.



**SECOND ADDITION
TO
WEEDEN HEIGHTS**

Plat showing, at reduced scale, SECOND ADDITION TO WEEDEN HEIGHTS, according to the plat thereof as recorded in the Office of the Judge of Probate of Lauderdale County, Alabama, in New Plat Book 2, at Pages 20 and 21. Superimposed thereon is the approximate location of the New Lee-Jackson Highway as taken from the right-of-way map on file in said probate records.