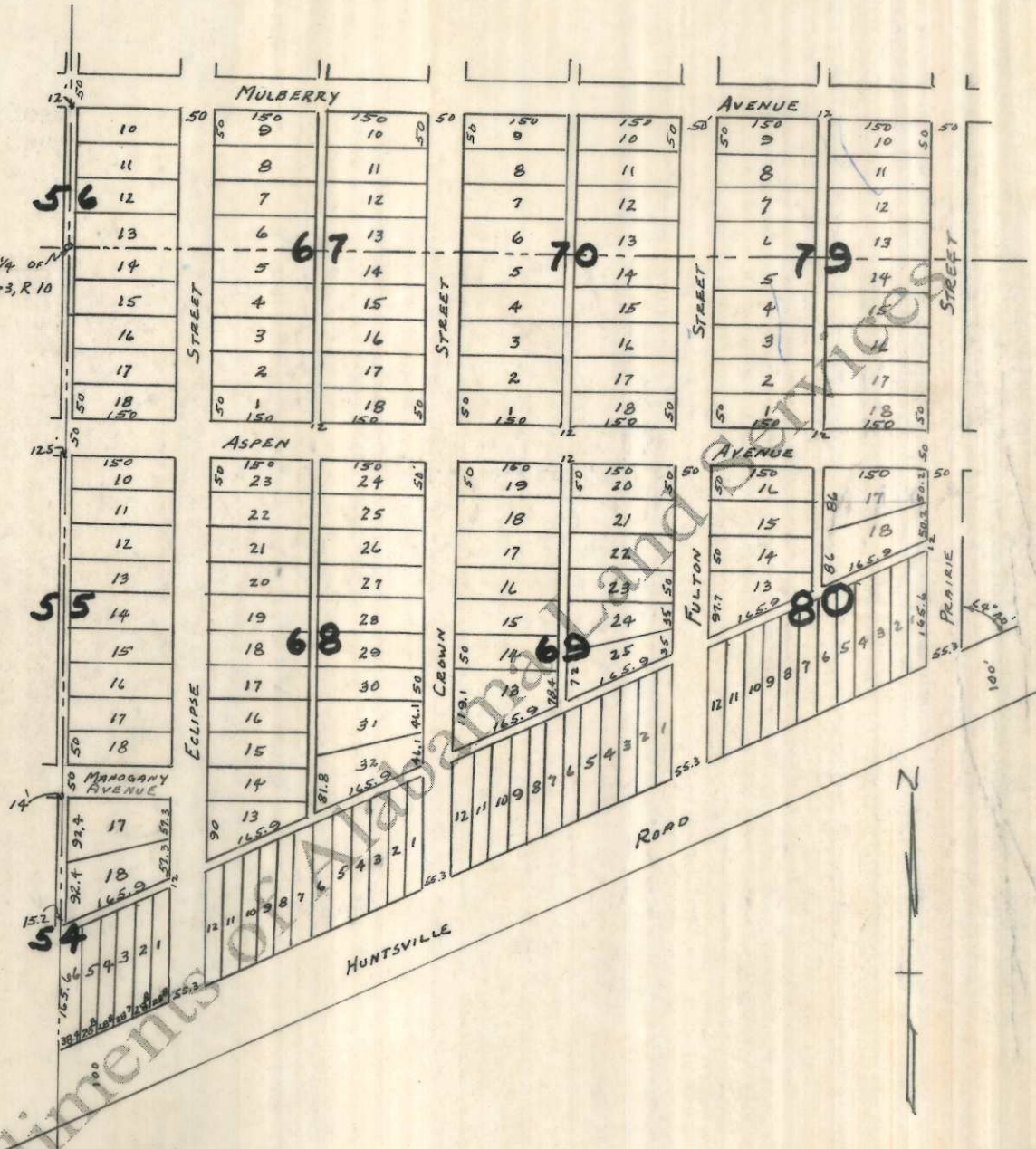


N.W. COR. OF NE 1/4 OF
SW 1/4 OF SEC. 6, T. 3, R. 10



Plat showing at reduced scale FIRST ADDITION TO WEEDEN PLACE according to the plat thereof recorded in the office of the Judge of Probate in Lauderdale County, Alabama, in New Plat Book No 1, at page 174.