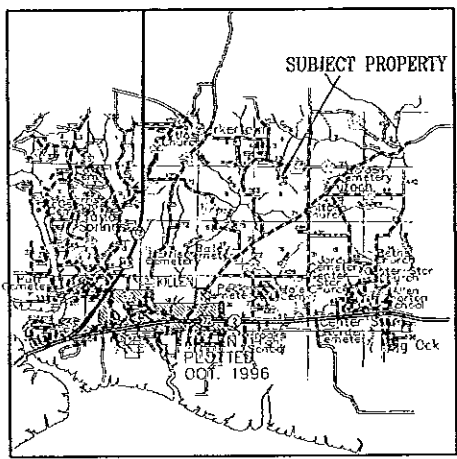
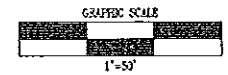
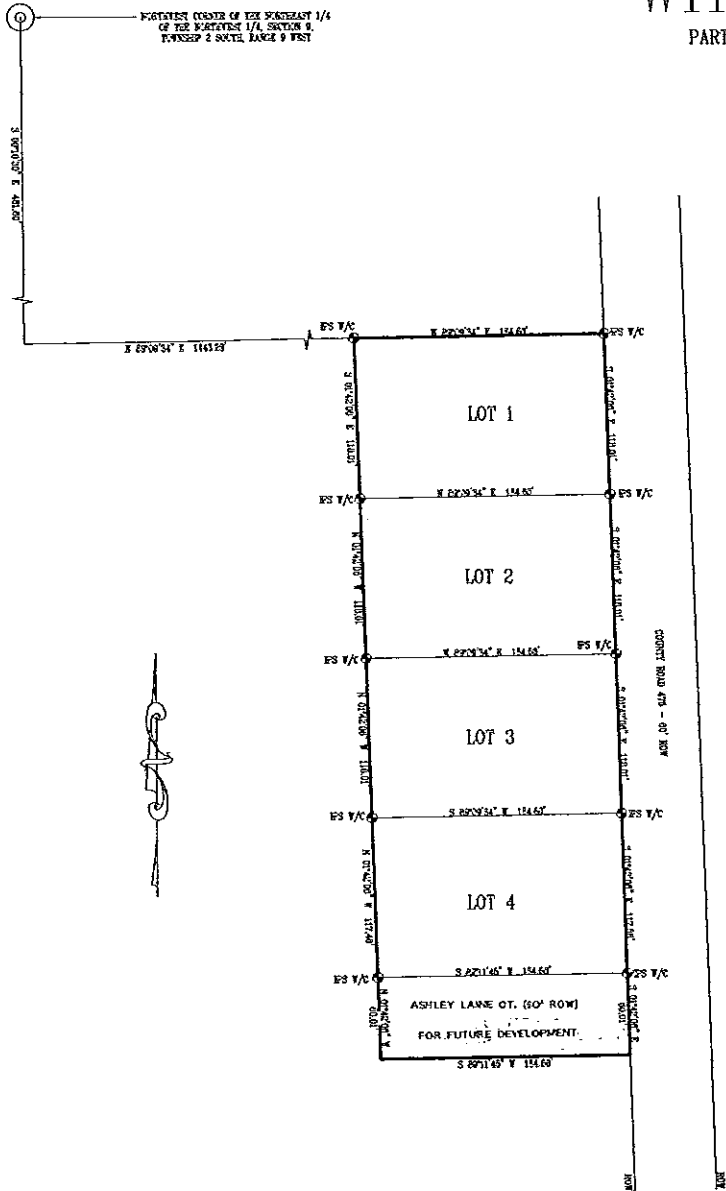


236

WHEATLEY POINTE

PART OF SECTION 9, TOWNSHIP 2 SOUTH, RANGE 9 WEST



VICINITY MAP

STATE OF ALABAMA
LAUDACRE COUNTY

THE LOTS OF THIS PLAT ARE SUBJECT TO APPROVAL OR REJECTION BY THE LAUDACRE COUNTY HEALTH DEPARTMENT. THE APPROVALS MAY CONTAIN CERTAIN CONDITIONS REGARDING TO THE CREDIT WATERFATHER TREATMENT SYSTEMS THAT COULD RESTRICT THE USE OF THE LOTS OR OBLIGATE OWNERS TO SPECIAL MAINTENANCE AND REPORTING REQUIREMENTS. THESE CONDITIONS ARE OF FILE WITH THE SAID HEALTH DEPARTMENT AND ARE MADE A PART OF THIS PLAT AS BY SEE CITY RECORD.

Chris Rhodes
ENVIRONMENTALIST

STATE OF ALABAMA
LAUDACRE COUNTY

I, DEBBY B. WOODRUFF, CLERK OF COURTS OF LAUDACRE COUNTY, ALABAMA, HEREBY CERTIFY THAT THE ATTACHED PLAT OF "WHEATLEY POINTE" HAS BEEN FILED IN THE OFFICE OF THE CLERK OF COURTS OF LAUDACRE COUNTY, ALABAMA, IN PLAT BOOK 1, PAGE 236.

THIS IS THE 25TH DAY OF April, 2012.

Debbie Woodruff
CLERK OF COURTS

STATE OF ALABAMA
LAUDACRE COUNTY

I, RONNIE E. WOODRUFF, A REGISTERED LAND SURVEYOR IN SAID STATE, DO HEREBY CERTIFY THAT I HAVE SCOUTED THAT CERTAIN TRACT OF LAND DESCRIBED AS "WHEATLEY POINTE" OF THE ABOVE PLAT SITUATED IN SECTION 9, TOWNSHIP 2 SOUTH, RANGE 9 WEST, LAUDACRE COUNTY, ALABAMA. I HAVE SCOUTED SAID TRACT SHOWING THE MARKSMEN'S POSITION, GIVING THE BEARINGS AND LENGTHS OF EACH LINE. I FURTHER CERTIFY THAT THE ABOVE PLAT IS A TRUE AND CORRECT PLAT OF SAID SURVEY AND SHOWS THE PROPER RELATIONSHIP TO THE U. S. GOVERNMENT SURVEY OF PUBLIC LANDS BY THE STATE OF ALABAMA.

I HEREBY CERTIFY THAT ALL PARTS OF THE ATTACHED SURVEY AND PLAT HAVE BEEN COMPLETED IN ACCORDANCE WITH THE REQUIREMENTS OF THE KNOWN TECHNICAL STANDARDS FOR THE PRACTICE OF LAND SURVEYING IN THE STATE OF ALABAMA.

GIVEN UNDER MY HAND AND SEAL, THIS THE 20TH DAY OF MARCH, 2012.

Ronnie E. Woodruff
RONNIE E. WOODRUFF
REGISTERED LAND SURVEYOR
ALA REG. NO. 15643



STATE OF ALABAMA
LAUDACRE COUNTY

I, JASON SMITH, MEMBER OF PUBLIC COUNCILS OF THE PROPERTY SHOWN ON THE PROPERTY PLATED ON THE ABOVE PLAT AND INCORPORATED AS "WHEATLEY POINTE", DO HEREBY ACCEPT AND EXPRESSLY ADMIT SAID PLAT AS THE OFFICIAL RECORD OF SAID, AND IN CONSIDERATION OF THE RESERVATION EXTENDED TO ACCESS BY US, OUR SUCCESSORS AND ASSIGNS, DO HEREBY GRANT AND CONVEY TO THE CITY OF FLORENCE, ITS SUCCESSORS AND ASSIGNS, THE FOLLOWING: STREETS AND PARCELS SHOWN HEREON FOR URBAN PURPOSES, WITH THE RIGHT OF EGRESS AND ACCESS, CARRYING THE BURDEN NECESSARY FOR THE INSTALLATION AND MAINTENANCE OF SUCH UTILITIES OVER THE RESERVATIVE MARKSMEN, INCLUDING THE RIGHT TO CUT AND CLEAR TREES OR OTHER OBSTACLES THAT MAY IMPER OR ENHANCE URBAN LINES.

GIVEN UNDER OUR HANDS, THIS THE 10TH DAY OF April, 2012.

Jason Smith
JASON SMITH
MEMBER

STATE OF ALABAMA
LAUDACRE COUNTY

I, THE UNDERSIGNED, A SOLICIT PUBLIC IN SAID STATE AND COUNTY, HEREBY CERTIFY THAT JASON SMITH, WHOSE NAME AS MEMBER OF PLAT, LLC IS SHOWN TO THE FOREGOING PLAT AND WHO IS KNOWN BY ME, AS AUTHORIZED ON THIS DATE, BEING FURNISHED OF THE CONTENTS OF SAID PLAT, ENDORSED THE SAID VALIDITY OF THE PLAT THE SAME BEING TRUE.

GIVEN UNDER MY HAND AND SEAL, THIS THE 10TH DAY OF April, 2012.

Abner C. Pinner Jr.
ABNER C. PINNER JR.
SOLICIT PUBLIC

PROF. PLAN. SEC. 11-1-12

STATE OF ALABAMA
LAUDACRE COUNTY

WE, BANK INDEPENDENT, AN INSTRUMENT OF LOTS 2 AND 3 OF THE PROPERTY PLATED HEREIN AND INCORPORATED AS "WHEATLEY POINTE" TO ACCEPT THE PLAT AS AN OFFICIAL RECORD OF SAID.

GIVEN UNDER OUR HAND AND SEAL, THE 19TH DAY OF April, 2012.

Mark Hill
MARK INDEPENDENT

STATE OF ALABAMA
LAUDACRE COUNTY

APPROVED FOR RECORDING BY THE LAUDACRE COUNTY FLOOD MANAGEMENT DEPARTMENT.

THIS IS THE 20TH DAY OF April, 2012.

Ken Allen
LAUDACRE COUNTY FLOOD MANAGEMENT DEPARTMENT

STATE OF ALABAMA
LAUDACRE COUNTY

APPROVED FOR RECORDING BY THE LAUDACRE COUNTY 911 BOARD.

THIS IS THE 22ND DAY OF April, 2012.

Debbie Woodruff
CLERK OF COURTS

STATE OF ALABAMA
LAUDACRE COUNTY

APPROVED FOR RECORDING BY THE COUNTY ENGINEER OF LAUDACRE COUNTY, ALABAMA.

THIS IS THE 24TH DAY OF April, 2012.

Ken Allen
COUNTY ENGINEER

THIS SURVEY IS INTENDED FOR THE SOLE PURPOSE AND USE BY THE PERSON NAMED THEREON AND IS NOT TRANSFERABLE.

LEGEND

•	SECTION	○	CONVEYED TO BY PLAT	○	W. 1/4 OF 1/4	---	UNDEVELOPED SECTION
•	1/4 SECTION	○	BY 1/4 OF 1/4	○	W. 1/2 OF 1/4	---	200' WIDE CORRIDOR
•	1/2 SECTION OR QUARTER	○	BY 1/2 OF 1/4	○	W. 3/4 OF 1/4	---	IN PLAT 1-1-12
•	3/4 SECTION	○	BY 3/4 OF 1/4	○	W. 1/4 OF 1/4	---	IN PLAT 1-1-12
•	SECTION	○	BY 1/2 OF 1/2	○	W. 1/2 OF 1/2	---	IN PLAT 1-1-12
•	SECTION	○	BY 3/4 OF 1/2	○	W. 3/4 OF 1/2	---	IN PLAT 1-1-12
•	SECTION	○	BY 1/4 OF 1/2	○	W. 1/4 OF 1/2	---	IN PLAT 1-1-12
•	SECTION	○	BY 1/2 OF 1/2	○	W. 1/2 OF 1/2	---	IN PLAT 1-1-12
•	SECTION	○	BY 3/4 OF 1/2	○	W. 3/4 OF 1/2	---	IN PLAT 1-1-12
•	SECTION	○	BY 1/4 OF 1/2	○	W. 1/4 OF 1/2	---	IN PLAT 1-1-12
•	SECTION	○	BY 1/2 OF 1/2	○	W. 1/2 OF 1/2	---	IN PLAT 1-1-12
•	SECTION	○	BY 3/4 OF 1/2	○	W. 3/4 OF 1/2	---	IN PLAT 1-1-12
•	SECTION	○	BY 1/4 OF 1/2	○	W. 1/4 OF 1/2	---	IN PLAT 1-1-12
•	SECTION	○	BY 1/2 OF 1/2	○	W. 1/2 OF 1/2	---	IN PLAT 1-1-12
•	SECTION	○	BY 3/4 OF 1/2	○	W. 3/4 OF 1/2	---	IN PLAT 1-1-12
•	SECTION	○	BY 1/4 OF 1/2	○	W. 1/4 OF 1/2	---	IN PLAT 1-1-12
•	SECTION	○	BY 1/2 OF 1/2	○	W. 1/2 OF 1/2	---	IN PLAT 1-1-12
•	SECTION	○	BY 3/4 OF 1/2	○	W. 3/4 OF 1/2	---	IN PLAT 1-1-12
•	SECTION	○	BY 1/4 OF 1/2	○	W. 1/4 OF 1/2	---	IN PLAT 1-1-12
•	SECTION	○	BY 1/2 OF 1/2	○	W. 1/2 OF 1/2	---	IN PLAT 1-1-12
•	SECTION	○	BY 3/4 OF 1/2	○	W. 3/4 OF 1/2	---	IN PLAT 1-1-12
•	SECTION	○	BY 1/4 OF 1/2	○	W. 1/4 OF 1/2	---	IN PLAT 1-1-12
•	SECTION	○	BY 1/2 OF 1/2	○	W. 1/2 OF 1/2	---	IN PLAT 1-1-12
•	SECTION	○	BY 3/4 OF 1/2	○	W. 3/4 OF 1/2	---	IN PLAT 1-1-12
•	SECTION	○	BY 1/4 OF 1/2	○	W. 1/4 OF 1/2	---	IN PLAT 1-1-12
•	SECTION	○	BY 1/2 OF 1/2	○	W. 1/2 OF 1/2	---	IN PLAT 1-1-12
•	SECTION	○	BY 3/4 OF 1/2	○	W. 3/4 OF 1/2	---	IN PLAT 1-1-12
•	SECTION	○	BY 1/4 OF 1/2	○	W. 1/4 OF 1/2	---	IN PLAT 1-1-12
•	SECTION	○	BY 1/2 OF 1/2	○	W. 1/2 OF 1/2	---	IN PLAT 1-1-12
•	SECTION	○	BY 3/4 OF 1/2	○	W. 3/4 OF 1/2	---	IN PLAT 1-1-12
•	SECTION	○	BY 1/4 OF 1/2	○	W. 1/4 OF 1/2	---	IN PLAT 1-1-12
•	SECTION	○	BY 1/2 OF 1/2	○	W. 1/2 OF 1/2	---	IN PLAT 1-1-12
•	SECTION	○	BY 3/4 OF 1/2	○	W. 3/4 OF 1/2	---	IN PLAT 1-1-12
•	SECTION	○	BY 1/4 OF 1/2	○	W. 1/4 OF 1/2	---	IN PLAT 1-1-12
•	SECTION	○	BY 1/2 OF 1/2	○	W. 1/2 OF 1/2	---	IN PLAT 1-1-12
•	SECTION	○	BY 3/4 OF 1/2	○	W. 3/4 OF 1/2	---	IN PLAT 1-1-12
•	SECTION	○	BY 1/4 OF 1/2	○	W. 1/4 OF 1/2	---	IN PLAT 1-1-12
•	SECTION	○	BY 1/2 OF 1/2	○	W. 1/2 OF 1/2	---	IN PLAT 1-1-12
•	SECTION	○	BY 3/4 OF 1/2	○	W. 3/4 OF 1/2	---	IN PLAT 1-1-12
•	SECTION	○	BY 1/4 OF 1/2	○	W. 1/4 OF 1/2	---	IN PLAT 1-1-12
•	SECTION	○	BY 1/2 OF 1/2	○	W. 1/2 OF 1/2	---	IN PLAT 1-1-12
•	SECTION	○	BY 3/4 OF 1/2	○	W. 3/4 OF 1/2	---	IN PLAT 1-1-12
•	SECTION	○	BY 1/4 OF 1/2	○	W. 1/4 OF 1/2	---	IN PLAT 1-1-12
•	SECTION	○	BY 1/2 OF 1/2	○	W. 1/2 OF 1/2	---	IN PLAT 1-1-12
•	SECTION	○	BY 3/4 OF 1/2	○	W. 3/4 OF 1/2	---	IN PLAT 1-1-12
•	SECTION	○	BY 1/4 OF 1/2	○	W. 1/4 OF 1/2	---	IN PLAT 1-1-12
•	SECTION	○	BY 1/2 OF 1/2	○	W. 1/2 OF 1/2	---	IN PLAT 1-1-12
•	SECTION	○	BY 3/4 OF 1/2	○	W. 3/4 OF 1/2	---	IN PLAT 1-1-12
•	SECTION	○	BY 1/4 OF 1/2	○	W. 1/4 OF 1/2	---	IN PLAT 1-1-12
•	SECTION	○	BY 1/2 OF 1/2	○	W. 1/2 OF 1/2	---	IN PLAT 1-1-12
•	SECTION	○	BY 3/4 OF 1/2	○	W. 3/4 OF 1/2	---	IN PLAT 1-1-12
•	SECTION	○	BY 1/4 OF 1/2	○	W. 1/4 OF 1/2	---	IN PLAT 1-1-12
•	SECTION	○	BY 1/2 OF 1/2	○	W. 1/2 OF 1/2	---	IN PLAT 1-1-12
•	SECTION	○	BY 3/4 OF 1/2	○	W. 3/4 OF 1/2	---	IN PLAT 1-1-12
•	SECTION	○	BY 1/4 OF 1/2	○	W. 1/4 OF 1/2	---	IN PLAT 1-1-12
•	SECTION	○	BY 1/2 OF 1/2	○	W. 1/2 OF 1/2	---	IN PLAT 1-1-12
•	SECTION	○	BY 3/4 OF 1/2	○	W. 3/4 OF 1/2	---	IN PLAT 1-1-12
•	SECTION	○	BY 1/4 OF 1/2	○	W. 1/4 OF 1/2	---	IN PLAT 1-1-12
•	SECTION	○	BY 1/2 OF 1/2	○	W. 1/2 OF 1/2	---	IN PLAT 1-1-12
•	SECTION	○	BY 3/4 OF 1/2	○	W. 3/4 OF 1/2	---	IN PLAT 1-1-12
•	SECTION	○	BY 1/4 OF 1/2	○	W. 1/4 OF 1/2	---	IN PLAT 1-1-12
•	SECTION	○	BY 1/2 OF 1/2	○	W. 1/2 OF 1/2	---	IN PLAT 1-1-12
•	SECTION	○	BY 3/4 OF 1/2	○	W. 3/4 OF 1/2	---	IN PLAT 1-1-12
•	SECTION	○	BY 1/4 OF 1/2	○	W. 1/4 OF 1/2	---	IN PLAT 1-1-12
•	SECTION	○	BY 1/2 OF 1/2	○	W. 1/2 OF 1/2	---	IN PLAT 1-1-12
•	SECTION	○	BY 3/4 OF 1/2	○	W. 3/4 OF 1/2	---	IN PLAT 1-1-12
•	SECTION	○	BY 1/4 OF 1/2	○	W. 1/4 OF 1/2	---	IN PLAT 1-1-12
•	SECTION	○	BY 1/2 OF 1/2	○	W. 1/2 OF 1/2	---	IN PLAT 1-1-12
•	SECTION	○	BY 3/4 OF 1/2	○	W. 3/4 OF 1/2	---	IN PLAT 1-1-12
•	SECTION	○	BY 1/4 OF 1/2	○	W. 1/4 OF 1/2	---	IN PLAT 1-1-12
•	SECTION	○	BY 1/2 OF 1/2	○	W. 1/2 OF 1/2	---	IN PLAT 1-1-12
•	SECTION	○	BY 3/4 OF 1/2	○	W. 3/4 OF 1/2	---	IN PLAT 1-1-12
•	SECTION	○	BY 1/4 OF 1/2	○	W. 1/4 OF 1/2	---	IN PLAT 1-1-12
•	SECTION	○	BY 1/2 OF 1/2	○	W. 1/2 OF 1/2	---	IN PLAT 1-1-12
•	SECTION	○	BY 3/4 OF 1/2	○	W. 3/4 OF 1/2	---	IN PLAT 1-1-12
•	SECTION	○	BY 1/4 OF 1/2	○	W. 1/4 OF 1/2	---	IN PLAT 1-1-12
•	SECTION	○	BY 1/2 OF 1/2	○	W. 1/2 OF 1/2	---	IN PLAT 1-1-12
•	SECTION	○	BY 3/4 OF 1/2	○	W. 3/4 OF 1/2	---	IN PLAT 1-1-12
•	SECTION	○	BY 1/4 OF 1/2	○	W. 1/4 OF 1/2	---	IN PLAT 1-1-12
•	SECTION	○	BY 1/2 OF 1/2	○	W. 1/2 OF 1/2	---	IN PLAT 1-1-12
•	SECTION	○	BY 3/4 OF 1/2	○	W. 3/4 OF 1/2	---	IN PLAT 1-1-12
•	SECTION	○	BY 1/4 OF 1/2	○	W. 1/4 OF 1/2	---	IN PLAT 1-1-12
•	SECTION	○	BY 1/2 OF 1/2	○	W. 1/2 OF 1/2	---	IN PLAT 1-1-12
•	SECTION	○	BY 3/4 OF 1/2	○	W. 3/4 OF 1/2	---	IN PLAT 1-1-12
•	SECTION	○	BY 1/4 OF 1/2	○	W. 1/4 OF 1/2	---	IN PLAT 1-1-12
•	SECTION	○	BY 1/2 OF 1/2	○	W. 1/2 OF 1/2	---	IN PLAT 1-1-12
•	SECTION	○	BY 3/4 OF 1/2	○	W. 3/4 OF 1/2	---	IN PLAT 1-1-12
•	SECTION	○	BY 1/4 OF 1/2	○	W. 1/4 OF 1/2	---	IN PLAT 1-1-12
•	SECTION	○	BY 1/2 OF 1/2	○	W. 1/2 OF 1/2	---	IN PLAT 1-1-12
•	SECTION	○	BY 3/4 OF 1/2	○	W. 3/4 OF 1/2	---	IN PLAT 1-1-12
•	SECTION	○	BY 1/4 OF 1/2	○	W. 1/4 OF 1/2	---	IN PLAT 1-1-12
•	SECTION	○	BY 1/2 OF 1/2	○	W. 1/2 OF 1/2	---	IN PLAT 1-1-12
•	SECTION	○	BY 3/4 OF 1/2	○	W. 3/4 OF 1/2	---	IN PLAT 1-1-12
•	SECTION	○	BY 1/4 OF 1/2	○	W. 1/4 OF 1/2	---	IN PLAT 1-1-12
•	SECTION	○	BY 1/2 OF 1/2	○	W. 1/2 OF 1/2	---	IN PLAT 1-1-12
•	SECTION	○	BY 3/4 OF 1/2	○	W. 3/4 OF 1/2	---	IN PLAT 1-1-12
•	SECTION	○	BY 1/4 OF 1/2	○	W. 1/4 OF 1/2	---	IN PLAT 1-1-12
•	SECTION	○	BY 1/2 OF 1/2	○	W. 1/2 OF 1/2	---	IN PLAT 1-1-12
•	SECTION	○	BY 3/4 OF 1/2	○	W. 3/4 OF 1/2	---	IN PLAT 1-1-12
•	SECTION	○	BY 1/4 OF 1/2	○	W. 1/4 OF 1/2	---	IN PLAT 1-1-12
•	SECTION	○	BY 1/2 OF 1/2	○	W. 1/2 OF 1/2	---	IN PLAT 1-1-12
•	SECTION	○	BY 3/4 OF 1/2	○	W. 3/4 OF 1/2	---	IN PLAT 1-1-12
•	SECTION	○	BY 1/4 OF 1/2	○	W. 1/4 OF 1/2	---	IN PLAT 1-1-12
•	SECTION	○	BY 1/2 OF 1/2	○	W. 1/2 OF 1/2	---	IN PLAT 1-1-12
•	SECTION	○	BY 3/4 OF 1/2	○	W. 3/4 OF 1/2	---	IN PLAT 1-1-12
•	SECTION	○	BY 1/4 OF 1/2	○	W. 1/4 OF 1/2	---	IN PLAT 1-1-12
•	SECTION	○	BY 1/2 OF 1/2	○	W. 1/2 OF 1/2	---	IN PLAT 1-1-12
•	SECTION	○	BY 3/4 OF 1/2	○	W. 3/4 OF 1/2	---	IN PLAT 1-1-12
•	SECTION	○	BY 1/4 OF 1/2	○	W. 1/4 OF 1/2	---	IN PLAT 1-1-12
•	SECTION	○	BY 1/2 OF 1/2	○	W. 1/2 OF 1/2	---	IN PLAT 1-1-12
•	SECTION	○	BY 3/4 OF 1/2	○	W. 3/4 OF 1/2	---	IN PLAT 1-1-12
•	SECTION	○	BY 1/4 OF 1/2	○	W. 1/4 OF 1/2	---	IN PLAT 1-1-12
•	SECTION	○	BY 1/2 OF 1/2	○	W. 1/2 OF 1/2	---	IN PLAT 1-1-12
•	SECTION	○	BY 3/4 OF 1/2	○	W. 3/4 OF 1/2	---	IN PLAT 1-1-12
•	SECTION	○	BY 1/4 OF 1/2	○	W. 1/4 OF 1/2	---	IN PLAT 1-1-12
•	SECTION	○	BY 1/2 OF 1/2	○	W. 1/2 OF 1/2	---	IN PLAT 1-1-1