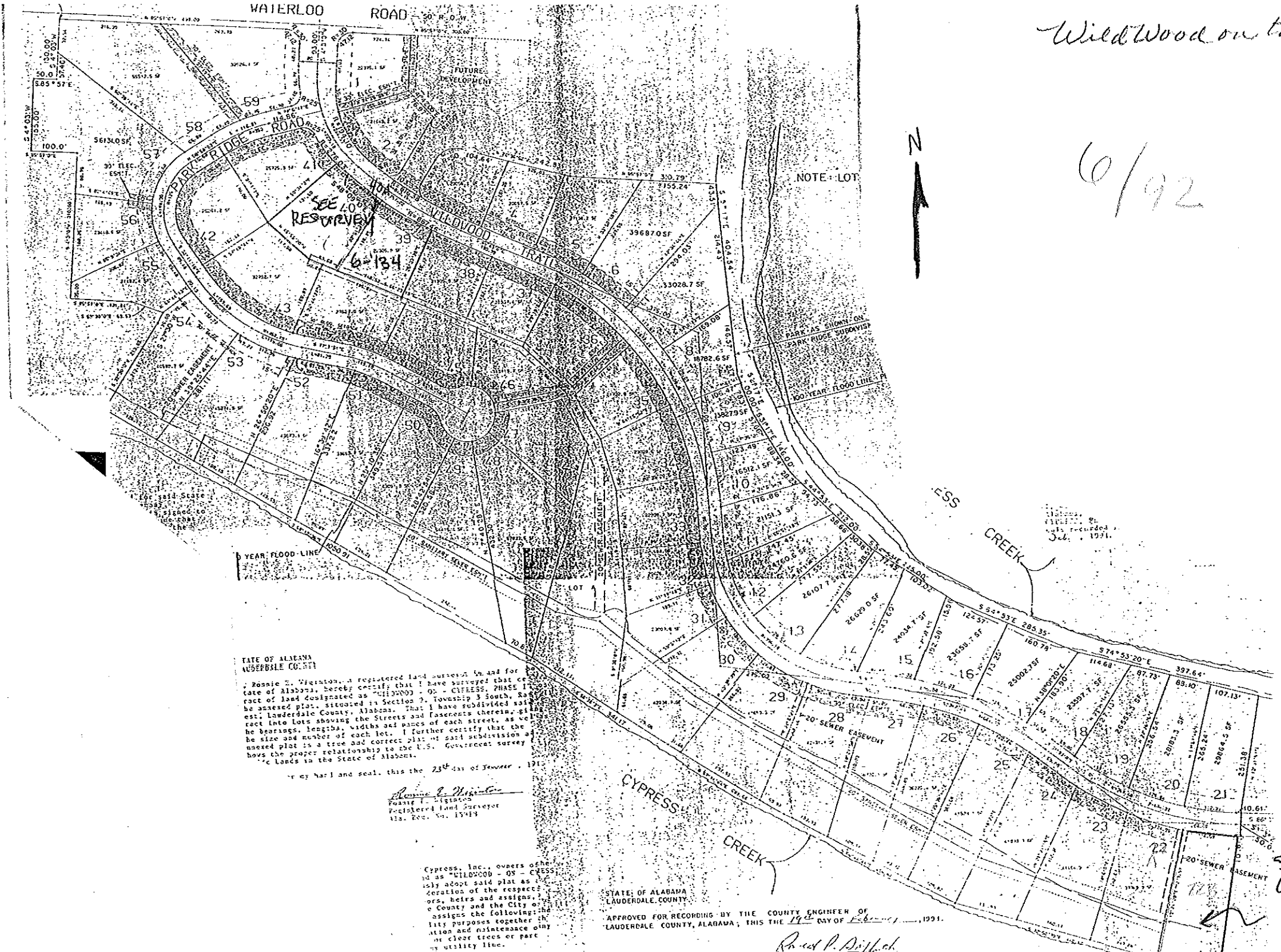


Wild Wood on the Cypress

6/92



STATE OF ALABAMA
LAUDERDALE COUNTY
I, Ronnie E. Wigginton, a registered land surveyor in and for the State of Alabama, hereby certify that I have surveyed that certain tract of land designated as "WILDWOOD - ON - CYPRESS, PHASE 1" and the annexed plat, situated in Section 7, Township 3 South, Range 1 West, Lauderdale County, Alabama. That I have subdivided said tract into lots showing the streets and easements therein, giving the bearings, lengths, widths and areas of each street, as well as the size and number of each lot. I further certify that the annexed plat is a true and correct plat of said subdivision and shows the proper relationship to the U.S. Government survey of the lands in the State of Alabama.

Witness my hand and seal, this the 23rd day of January, 1991.
Ronnie E. Wigginton
Ronnie E. Wigginton
Registered Land Surveyor
No. 282, No. 15418

Cypress, Inc., owners of the land herein, hereby adopt said plat as the true and correct plat of the same, and the City of Lauderdale County and the City of Wetumpka, Alabama, do hereby assign together with the land herein, the right of way and maintenance of any street, alley or utility line.

STATE OF ALABAMA
LAUDERDALE COUNTY
APPROVED FOR RECORDING BY THE COUNTY ENGINEER OF LAUDERDALE COUNTY, ALABAMA; THIS THE 19th DAY OF February, 1991.

Ronald P. Duffich
COUNTY ENGINEER

SEE
WILDWOOD-ON-
CYPRESS
Lot 60
6-113