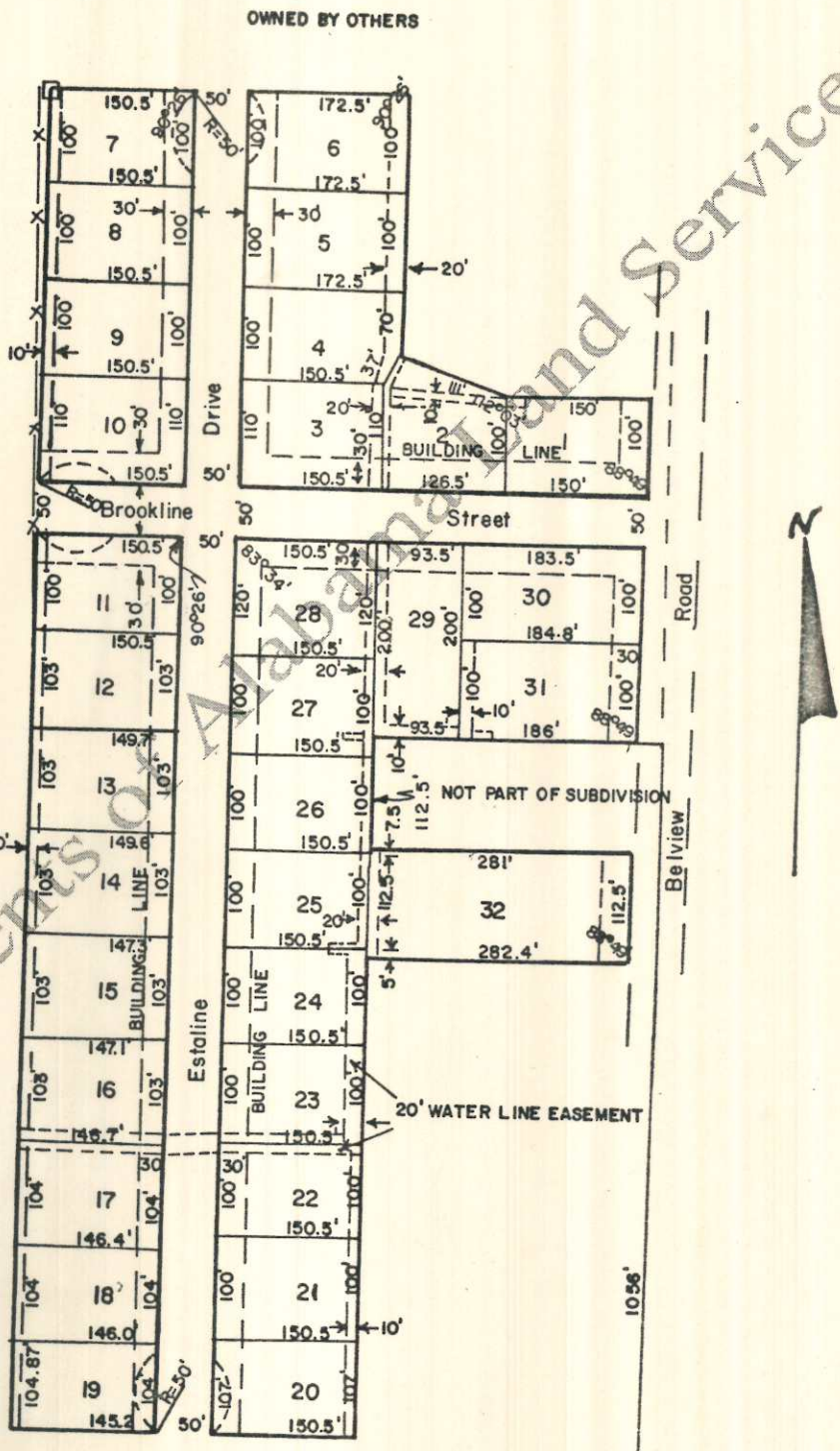
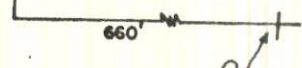


Compliments of Alabama Land Services



ANCHOR EASEMENT 4'x 25'
UTILITY EASEMENTS AS SHOWN

Note: If and after adjoining property is developed, the area in excess of a 50' right-of-way for street, which is now designated a Cul de sacs, will revert to the adjoining lots and will become a part of that lot.



SE. COR. SFC. 36,
T 23, R 11W,
LAUDERDALE COUNTY, ALA.

Plat showing at reduced scale, WINDCREST HEIGHTS SUBDIVISION PLAT NO. TWO, according to the plat thereof recorded in the office of the Judge of Probate of Lauderdale County, Alabama, in Plat Book 4, page 32.