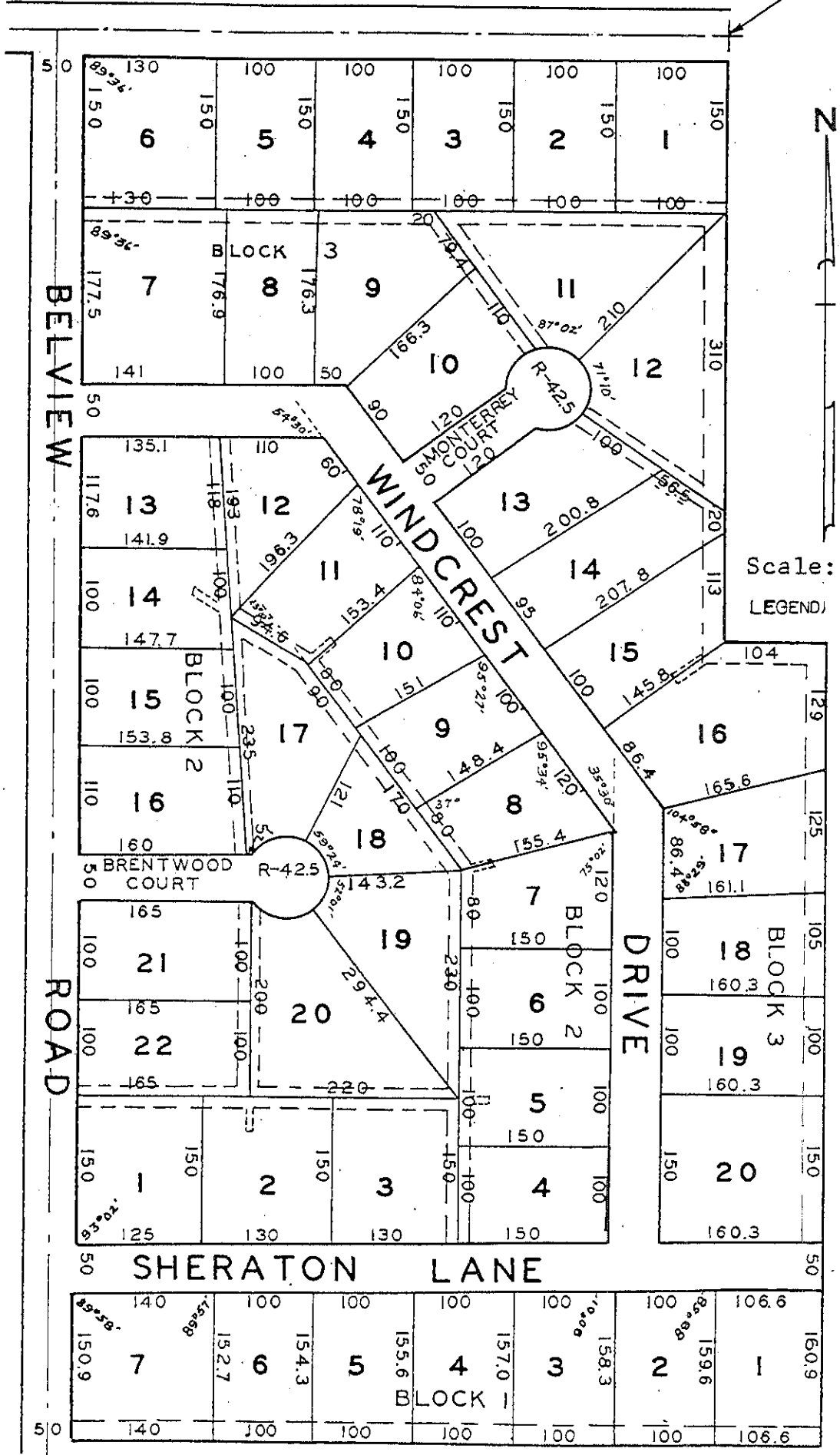


N.W. COR. OF SW 1/4
SEC. 31 T2S R10W



Scale: 1" - 150'
LEGEND:
- - - - - UTILITY EASEMENT
..... ANCHOR EASEMENT

Plat showing, at reduced scale, WINDCREST HEIGHTS SUBDIVISION, according to the plat thereof recorded in the Office of the Judge of Probate of Lauderdale County, Alabama in Plat Book 3, Page 90.

WINDCREST HEIGHTS
Part of Section 36, Township 2 S, Range 11 W.
Lauderdale County, Alabama

STATE OF ALABAMA
COUNTY OF LAUDERDALE

I, William A. Hallmark, a Registered land Surveyor hereby certify that this Map or Plat is a true and correct map or plat of a survey made by me, and shows the lengths and angles of all streets and public ways and the length and angles of each lot line, together with the number of each lot, and showing the relation to the original survey of public lands in the State of Alabama. Given under my hand this the 4th day of March, 1959.

/s/ William A. Hallmark
William A. Hallmark
Ala. State Reg. No. 2474

STATE OF ALABAMA
COUNTY OF LAUDERDALE

We the undersigned, Ira Kneeland Hibbett, Betty Butler Hibbett, James Kenneth Butler and Florine Butler, Owners of the property shown hereon and designated as Windcrest Heights, accept and expressly adopt said plat as an official record of same and in consideration of the respective benefits to accrue to me my successors, heirs and assigns do hereby grant and convey to the City of Florence, Alabama, its successors and assigns as follows, the Streets and public alleys for Electric, Telephone, Water and Sewer Services shown hereon and other rights of way conveying the privileges necessary for the installation and maintenance of such utilities over the respective rights of way including the right to cut clear trees or parts thereof, or other objects that may injure or endanger overhead lines. Given my hand at Florence Ala. This the 6th day of March, 1959.

/s/ Ira Kneeland Hibbett

Ira Kneeland Hibbett

/s/ Betty Butler Hibbett

Betty Butler Hibbett

/s/ James Kenneth Butler

James Kenneth Butler

/s/ Florine Butler

Acknowledged in General Code Form by all Owners before Charles D. Murphy, a Notary Public for Lauderdale County, Alabama, on March 6, 1959.

STATE OF ALABAMA
COUNTY OF LAUDERDALE

I, Estes R. Flynt, Probate Judge, hereby certify that the annexed plat was filed in this Office at 3:30 P.M. O'Clock on this the 16 day of March, 1959. and is recorded in Plat Book 3, Page 90.

Witness my hand this the 16 day of March, 1959.

/s/ Estes R. Flynt

Estes R. Flynt, Probate Judge

STATE OF ALABAMA
COUNTY OF LAUDERDALE

Approved by the City of Florence Planning Commission, This the 12th day of March, 1959.

/s/ T. Eugene Burts

Chairman

STATE OF ALABAMA
COUNTY OF LAUDERDALE

Approved by the City Engineer, Florence, Alabama, this the 4th day of March, 1959.

/s/ William A. White, Engr.

White and Hallmark, Engineers

STATE OF ALABAMA
COUNTY OF LAUDERDALE

Approved by the City Commission City of Florence, this the 12th day of March, 1959

/s/ E.F. Martin

Mayor

STATE OF ALABAMA, LAUDERDALE COUNTY

Approved by the Lauderdale County Health Department this the 12th day of March, 1959