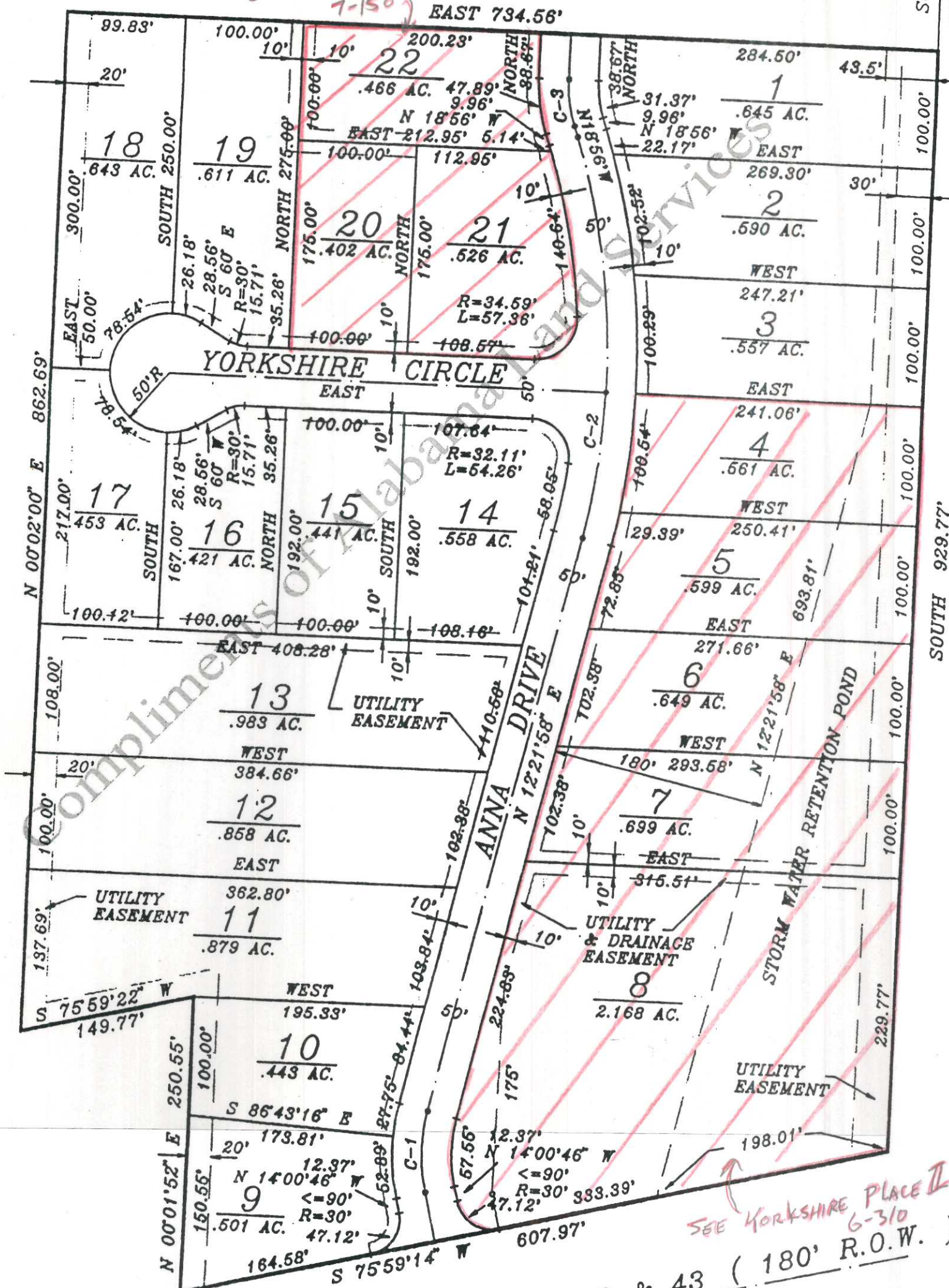


YORKSHIRE PLACE, ACCORDING TO THE PLAT THEREOF RECORDED IN THE OFFICE OF THE JUDGE OF PROBATE OF LAUDERDALE COUNTY, ALABAMA, IN PLAT BOOK 6, PAGE 194.

SEE RESURVEY 7-150



SEE YORKSHIRE PLACE II 6-310

U. S. HIGHWAY NO. 72 & 43 (180' R.O.W.)

N.	LENGTH
15'	69.06'
00'	341.25'
00'	39.63'