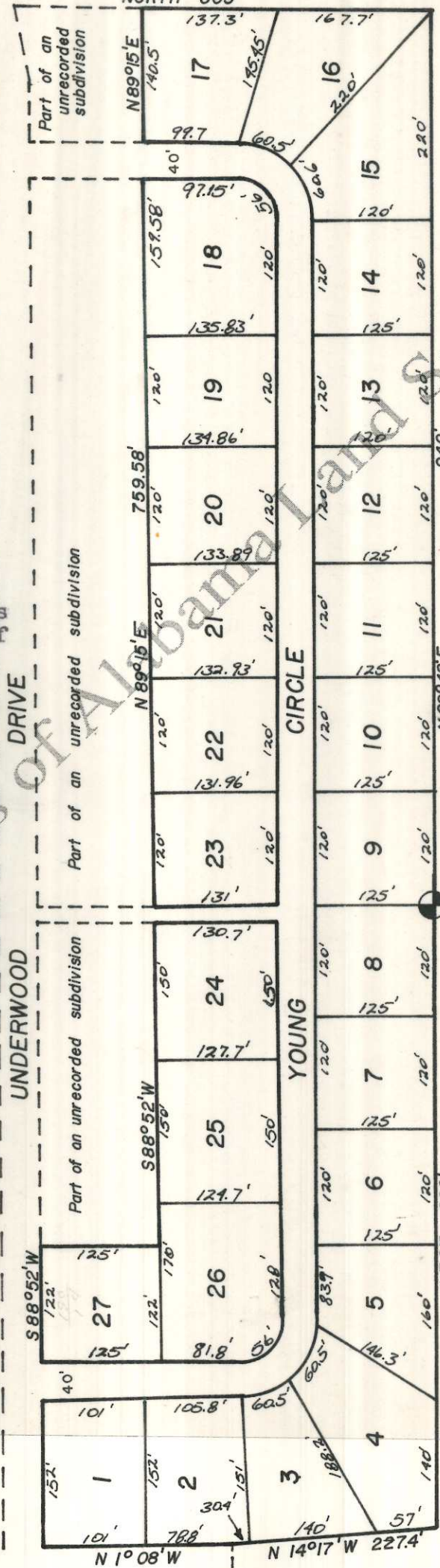


Not platted

NORTH 305'



NOTE: For interior angles please note plat of record.

Plat showing, at reduced scale, JOHNNY YOUNG'S SUBDIVISION, according to the plat thereof as recorded in the office of the Judge of Probate of Lauderdale County, Alabama, in Plat Book 3, at page 135.

Copyrights of Alabama Land Services

SW COR. NE 1/4 OF NE 1/4 SEC. 21, TP. 2, R. 11 W.

YOUNG'S

ADDITION