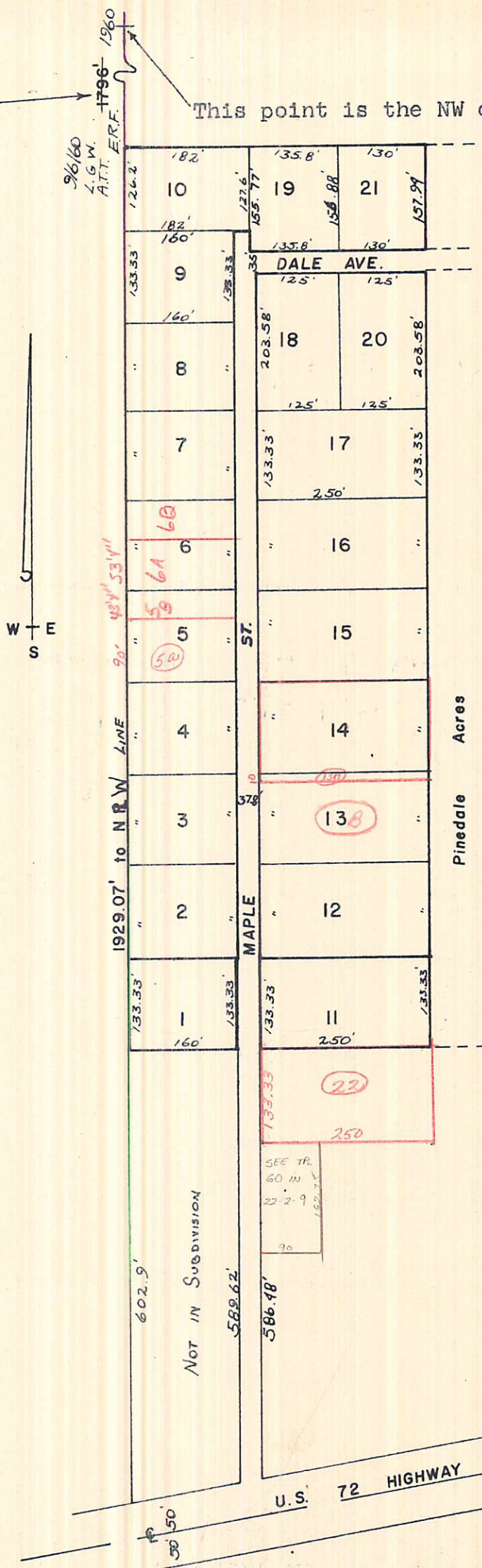


NOTE: Many of the figures and lines are indistinct on the recorded plat.

PLAT showing, at reduced scale, PINEDALE ACRES, in Luaderdale County, Alabama, according to the plat thereof as recorded in the Office of the Judge of Probate of said County and State in Plat Book 3, at page 41.

This distance should be 1960'. -- Abstractor

This point is the NW corner of NE  $\frac{1}{4}$  of Sec. 22  
Twp. 2  
Rng. 9 W.



Pinedale Acres

SEE TR.  
60 M  
22-2-9  
90

U.S. 72 HIGHWAY N 85° 16 E

ACRES

PLAT showing at reduced scale, PINEDALE/ADDITION; according to the plat thereof recorded in the Office of the Judge of Probate of Lauderdale County, Alabama, in New Plat Book 3, at page 127.