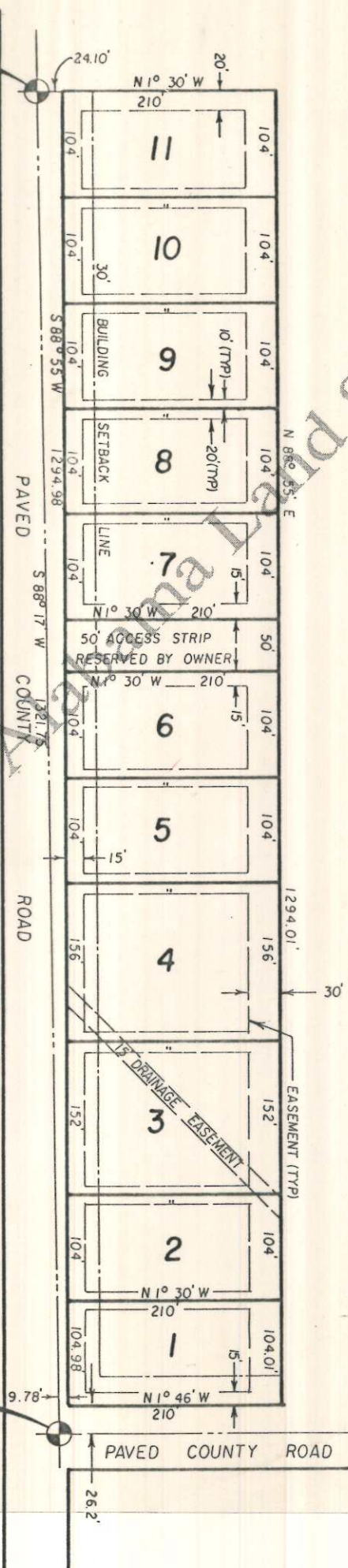


SW COR. SE 1/4 of
SW 1/4 SEC 1, T-2-S,
R-12-W



SCALE: 1" = 150'

SE COR. SE 1/4 of
SW 1/4 SEC. 1, T-2-S,
R-12-W

Plat showing, at reduced scale, PISGAH ACRES, according to the plat thereof recorded in the Office of the Judge of Probate of Lauderdale County, Alabama, in Plat Book 5, Page 69.