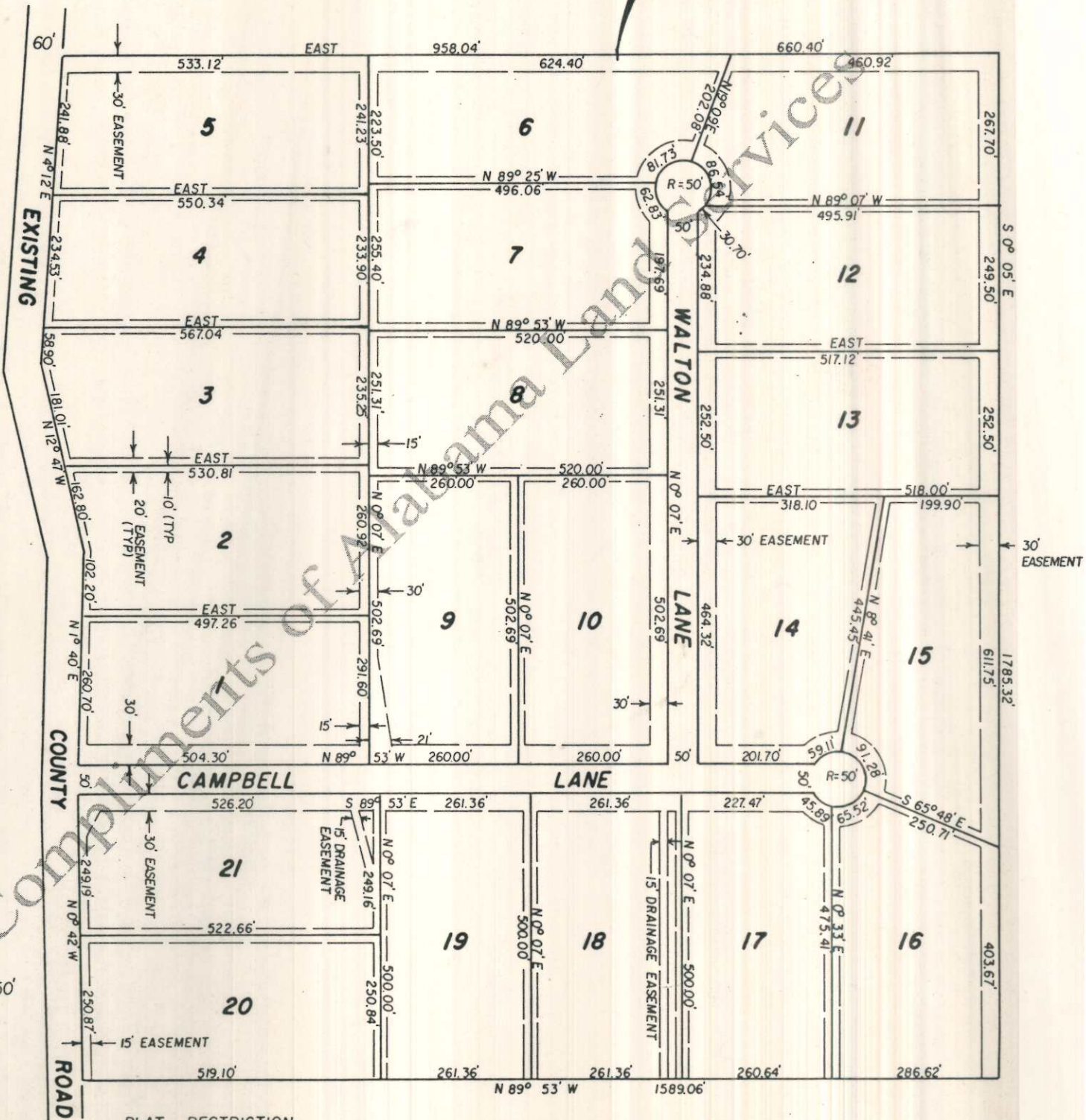


THIS POINT IS 3957.01 FEET SOUTH AND 2971.92 FEET EAST OF THE CENTER OF SECTION 36, TOWNSHIP 2 SOUTH, RANGE 9 WEST, LAUDERDALE COUNTY, ALABAMA.



PLAT RESTRICTION

The tracts subdivided hereon shall not be further divided into parcels of less than three acres in size until such lots have access to a public sewer.

Plat showing, at reduced scale, PLEASANT VALLEY ACRES, according to the plat thereof recorded in the Office of the Judge of Probate of Lauderdale County, Alabama, in Plat Book 5, Page 66.

SCALE: 1" = 250'