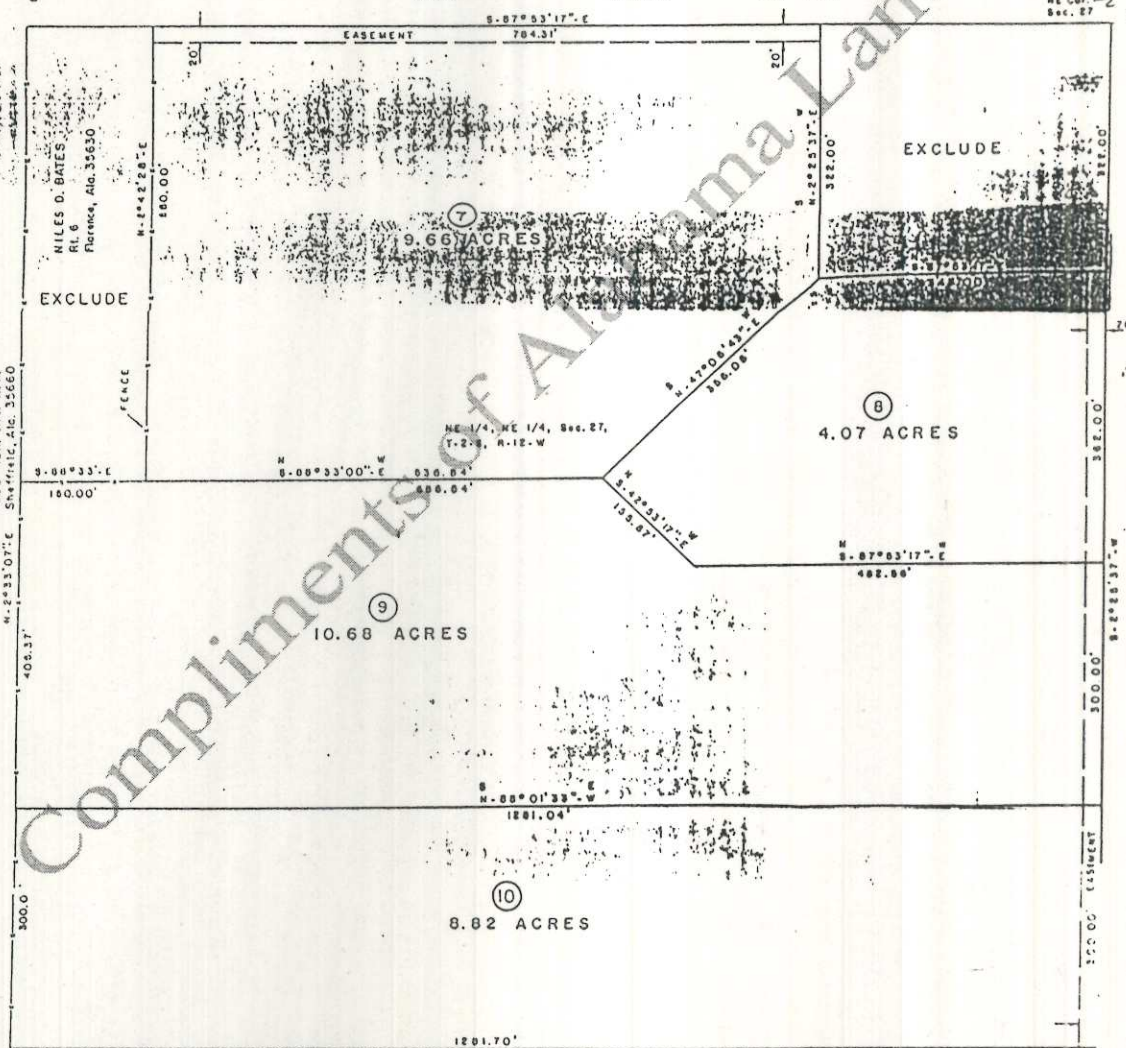
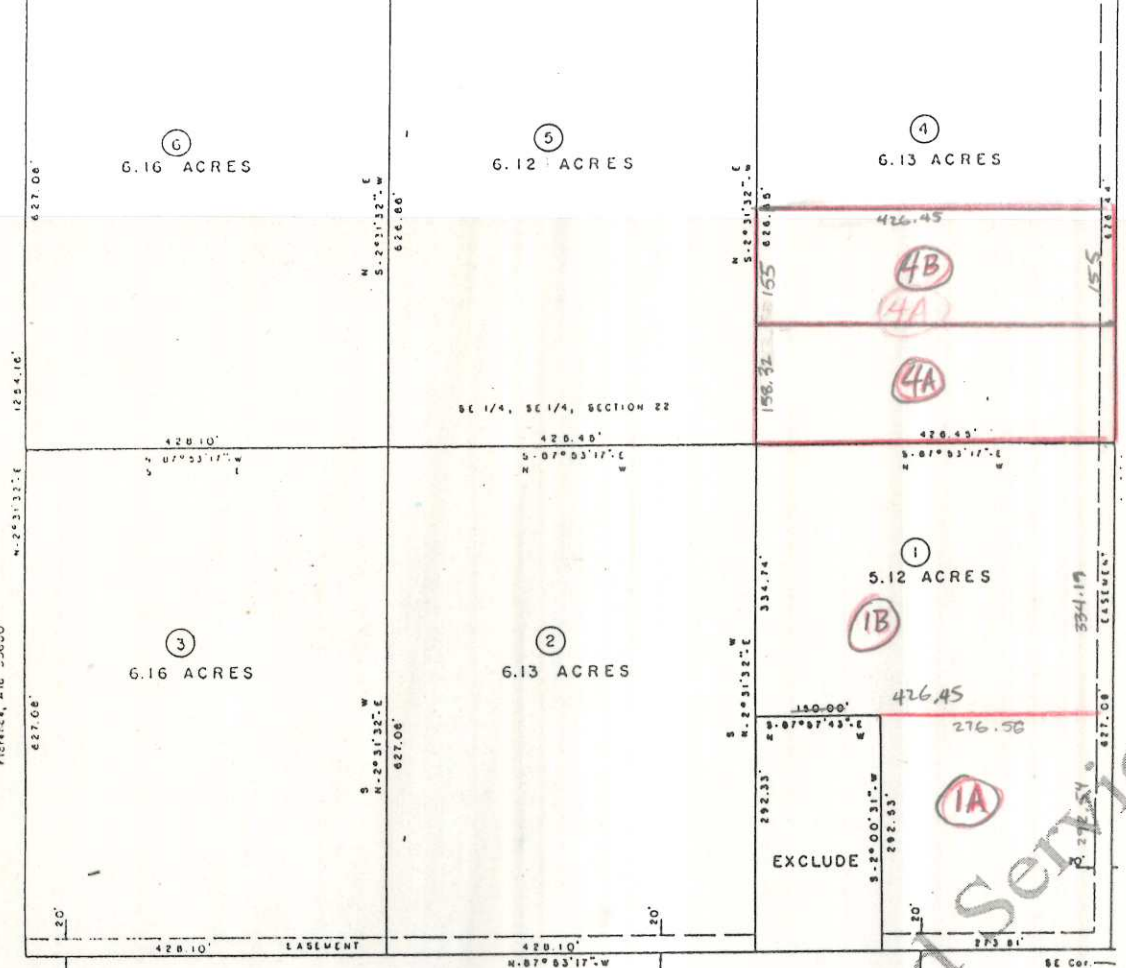


ALL IN T-2-S, R-12-W, LAUDERDALE COUNTY, ALABAMA

MARLEY W. THOMAS, JR.
PL 14, Box 65
Florence, Ala. 35630

MARLEY W. THOMAS
PL C
Florence, Ala. 35630

MARLEY F. JOHNSON
PL 6
Florence, Ala. 35630



Compliments of Alabama Land Services



Quigley Farm
SE of SE of S-22
+
NE of NE of S-27
2-12
Book 6 Pg. 12