

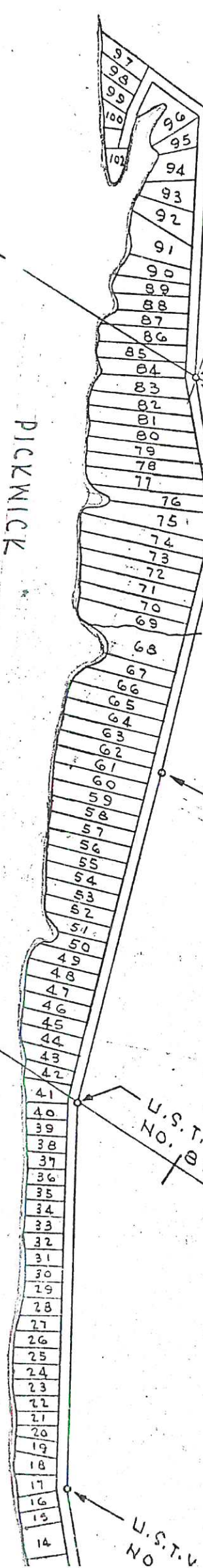
SUNSET BEACH



9/10
16/15

LANDING

PICKNICK



U.S.T.V.A. MONUMENT
NO. 78
4/3
9/10

SE COR. OF NE 1/4 OF NE 1/4 OF
SEC. 9, T3S, R13W.
U.S.T.V.A. MONUMENT
NO. 79

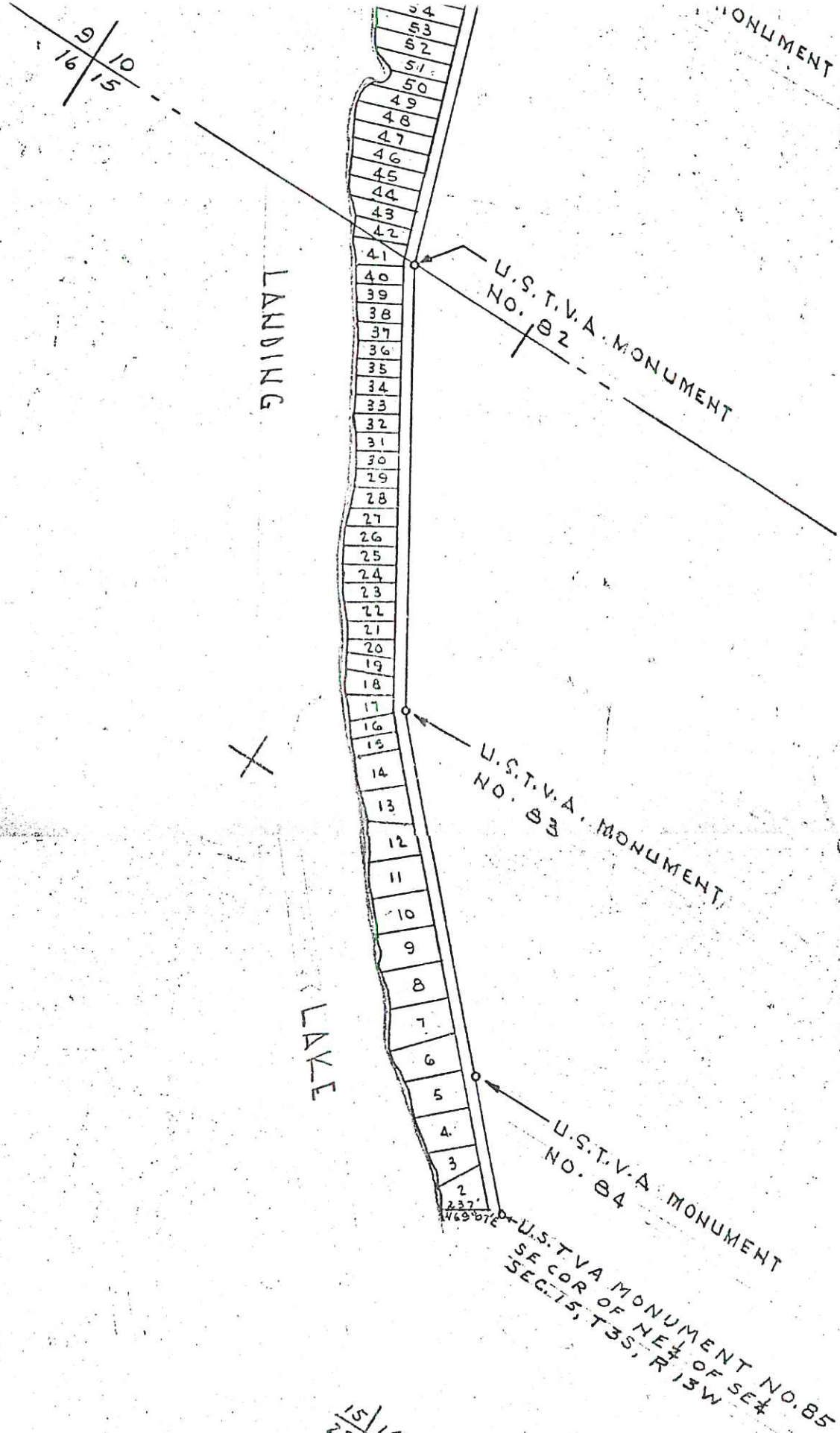
U.S.T.V.A. MONUMENT
NO. 80

U.S.T.V.A. MONUMENT
NO. 81

U.S.T.V.A. MONUMENT
NO. 82

U.S.T.V.
NO.

10/11
15/14



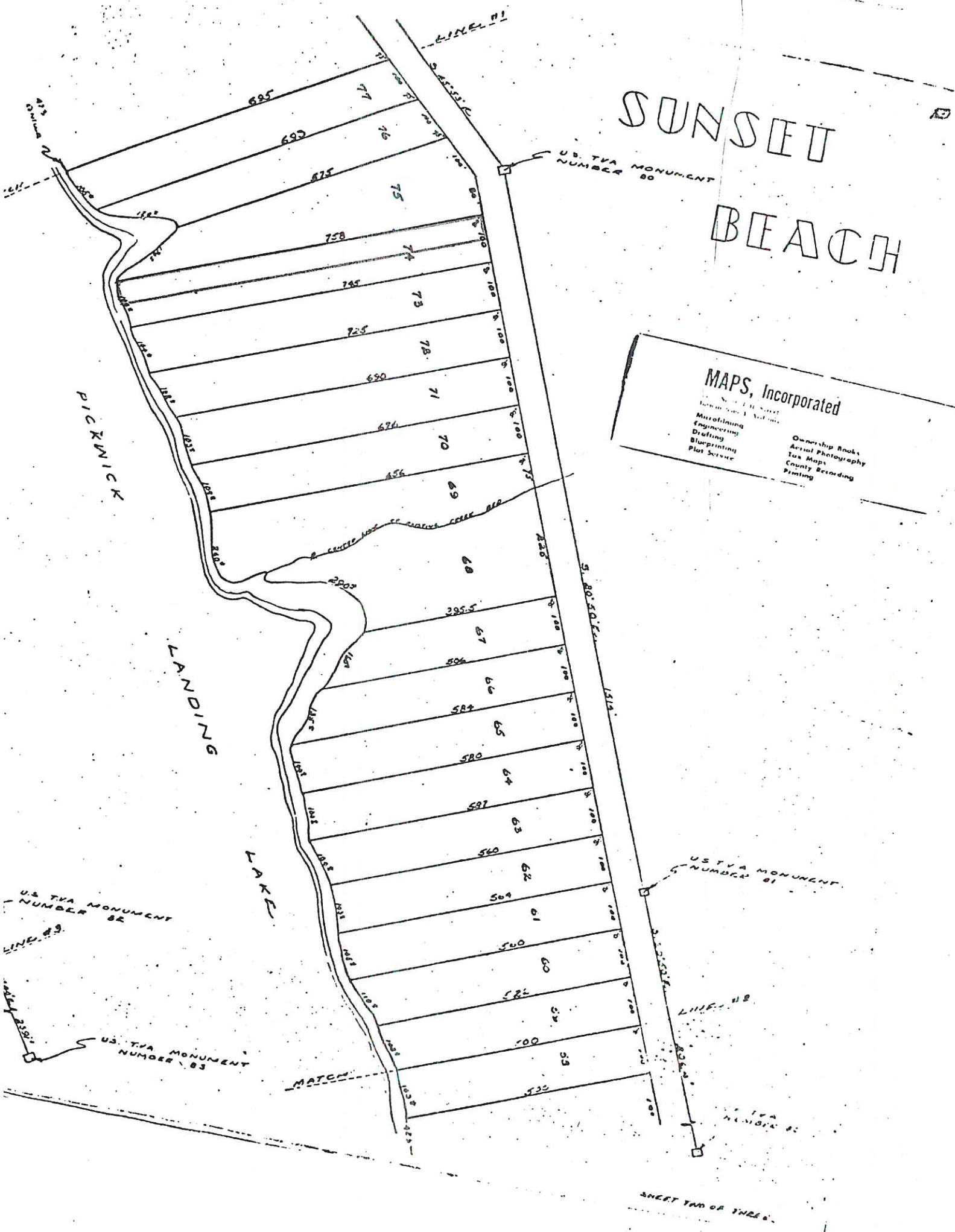
Plat showing the relation to Section 9, 10, and 15, Township 3, Range 13 West, in Lauderdale County, Alabama of SUNSET BEACH, according to the plat thereof recorded in the Office of the Judge of Probate of said County in Plat Book 3, Pages 9, 9-A, and 9-B.

SUNSET BEACH

MAPS, Incorporated
 100 North 1st Street
 Birmingham, Alabama

- Microfilming
- Engineering
- Drafting
- Bluprinting
- Plot Service

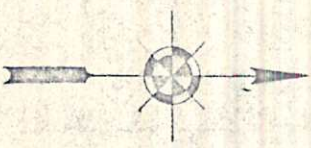
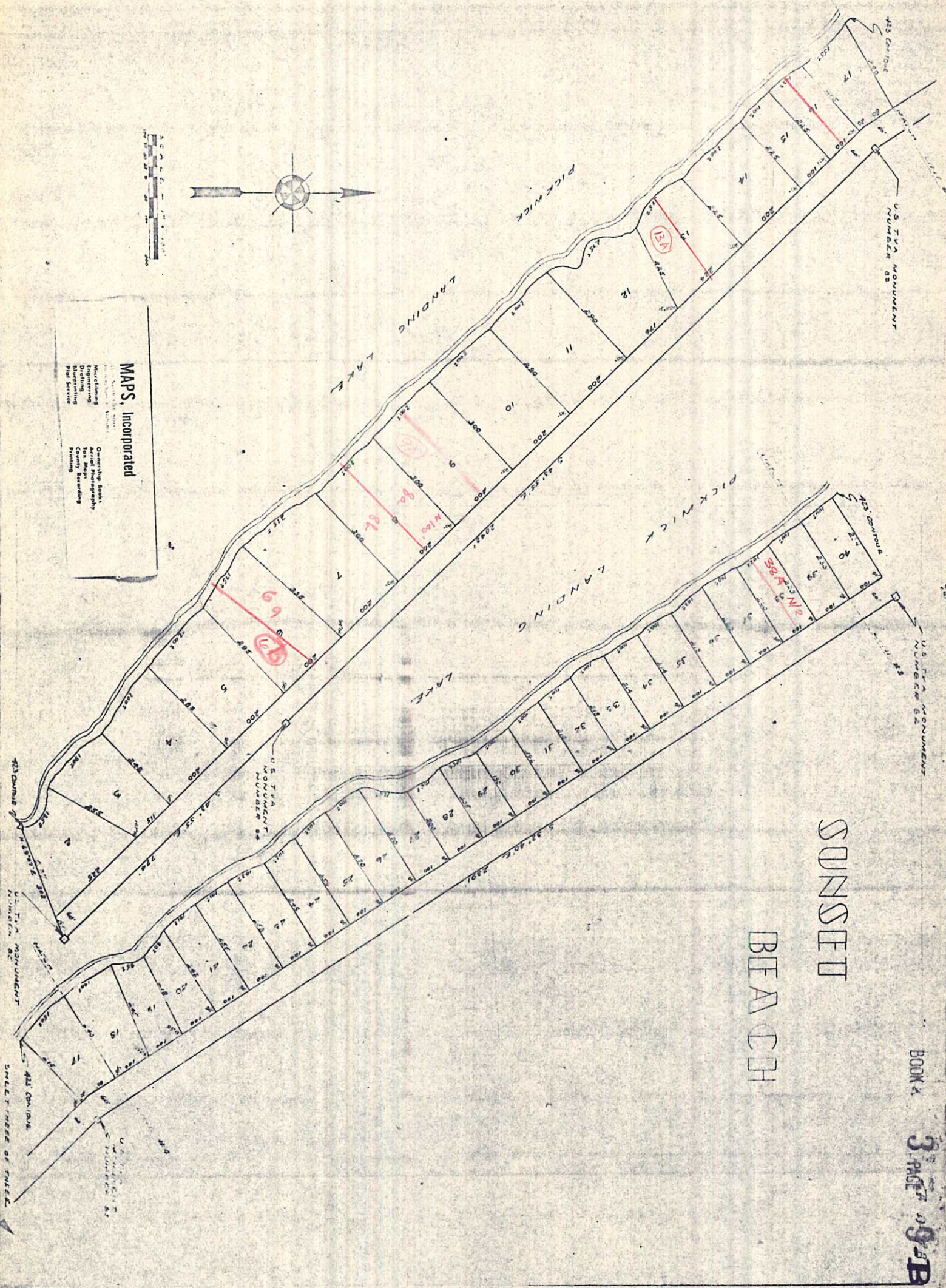
- Ownership Books
- Aerial Photography
- Tax Maps
- County Recording
- Printing



Plat showing part of SUNSET BEACH, a subdivision in Lauderdale County, Alabama, according to the plat thereof recorded in the Office of the Judge of Probate of said County in Plat Book 3, at pages 9, 9-A and 9-B.

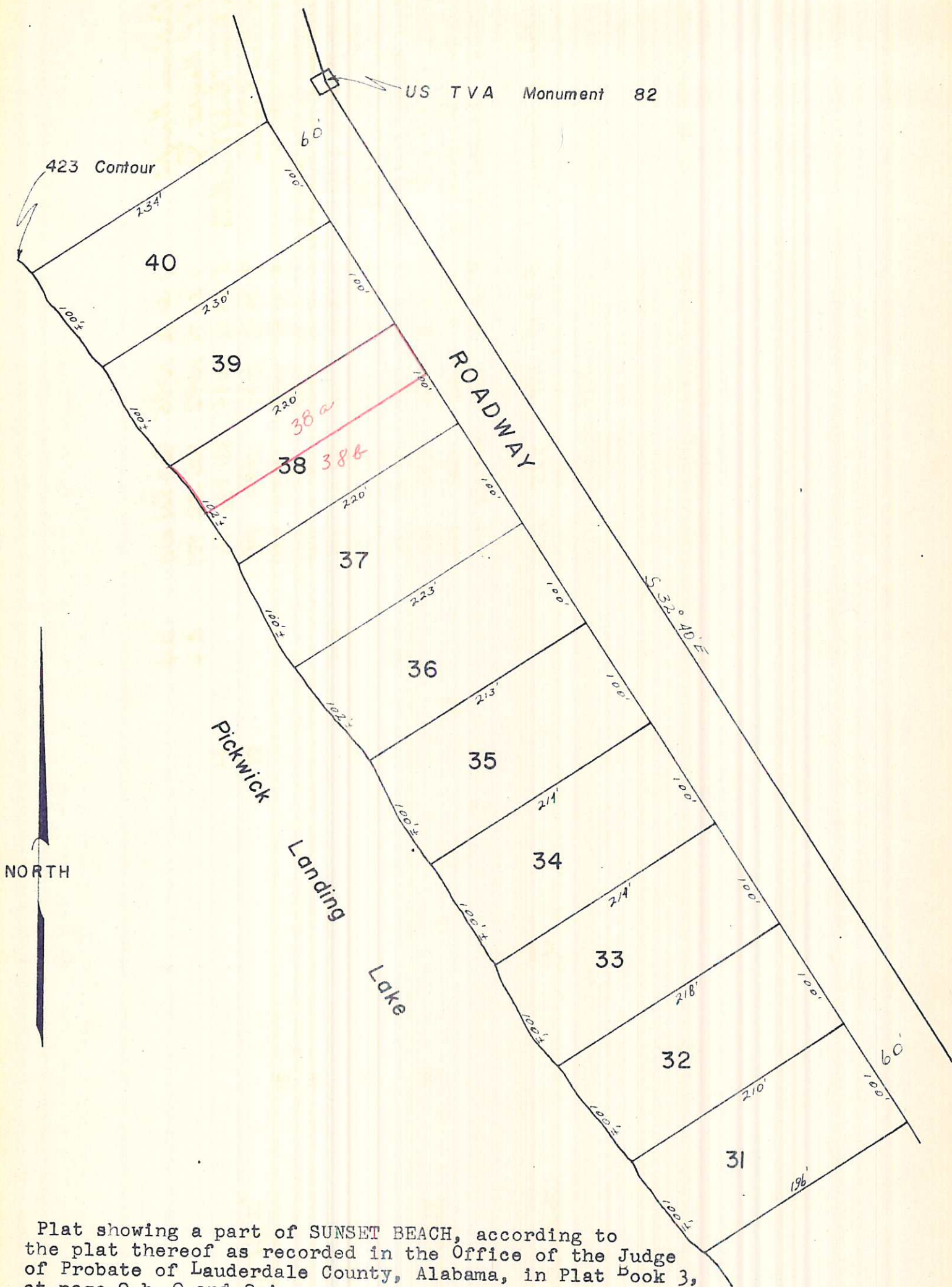
6

SUNSET BEACH



MAPS, Incorporated
 1111 North 1st Street
 Anchorage, Alaska 99501
 (907) 562-1111

Metrolithing
 Engineering
 Blotting
 Plot Service
 Surveying
 Surveying
 County Recording
 Printing



Plat showing a part of SUNSET BEACH, according to the plat thereof as recorded in the Office of the Judge of Probate of Lauderdale County, Alabama, in Plat Book 3, at page 9 b.9 and 9-A.

SUNSEID

BEACH

BOOK

3 PAGE

94A

MAPS, Incorporated
1111 North 1st Street
Seattle, Washington
Engineering
Drafting
Surveying
Plan Services
Contracting
Photography
Site Mapping
Quantity Estimating
Printing

