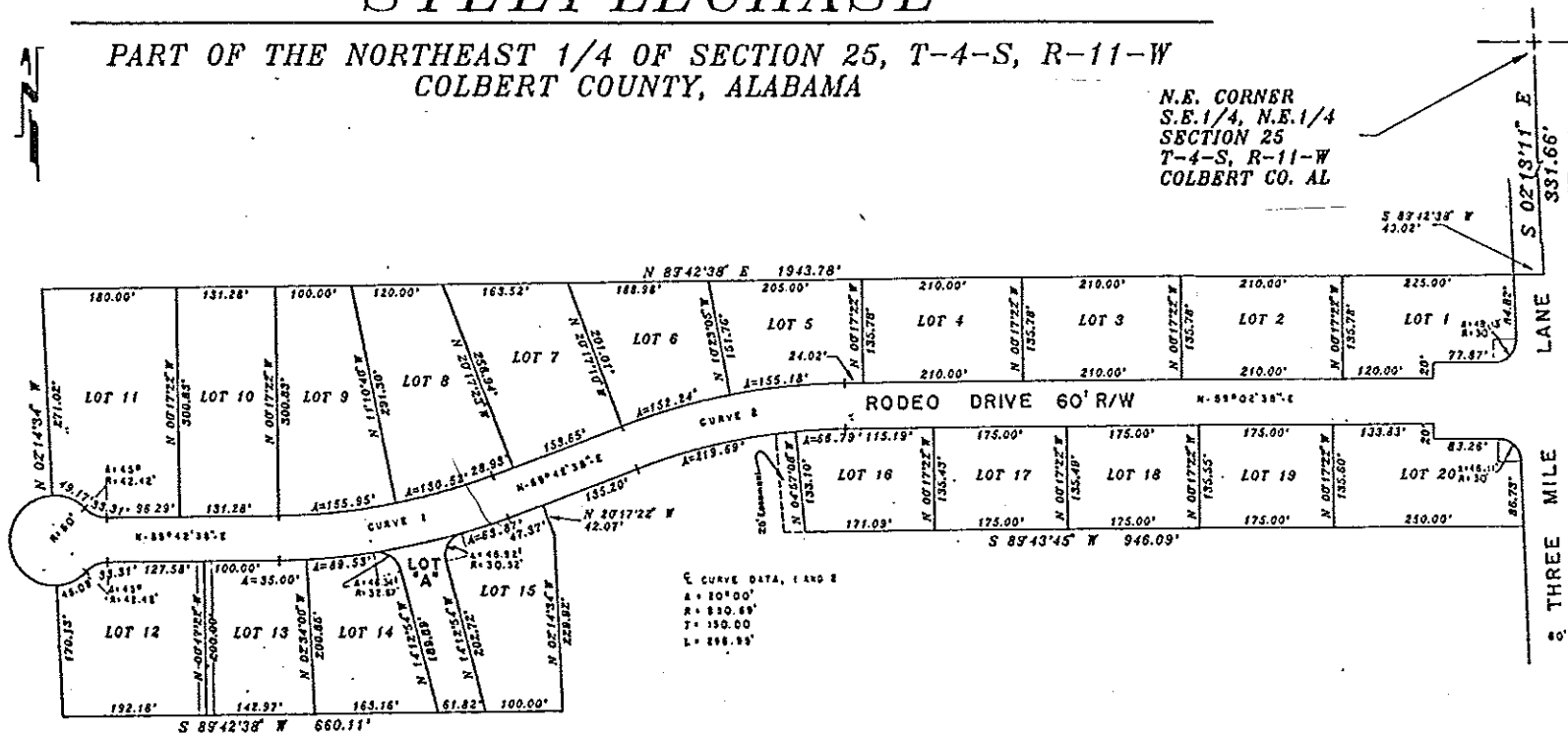


STEEPLECHASE

PART OF THE NORTHEAST 1/4 OF SECTION 25, T-4-S, R-11-W
COLBERT COUNTY, ALABAMA

N.E. CORNER
S.E. 1/4, N.E. 1/4
SECTION 25
T-4-S, R-11-W
COLBERT CO. AL



1991 OCT 31 AM 9:02
PAGE 2 OF 2
TAX

9120 220

1991 OCT 31 AM 9:02
Cabinet C
Slide 24
TAX
File 9/20/220

NOTE:
There is proposed a 10 foot utility easement on each side of each side lot line and a 10 foot utility easement from each front lot line.

STATE OF ALABAMA
COUNTY OF COLBERT

I, S. K. Alexander, a registered land surveyor, hereby certify that I have surveyed that tract of land designated as STEEPLCHASE, being a part of the Northeast 1/4 of Section 25, Township 4 South, Range 11 West, Colbert County, Alabama, that I have subdivided said tract of land into lots, giving the bearings and length, or length of each lot line as appropriate and have shown the streets and easements therein, giving the correct location and width of each, that the annexed plat is a true and correct plat of said subdivision, and shows the correct relationship to the U. S. Government Survey of public lands in the State of Alabama. This the 29 day of October, 1991.

S. K. Alexander
S. K. Alexander, Registered Land Surveyor
Alabama Certificate No. 2161

STATE OF ALABAMA
COUNTY OF COLBERT

I, the undersigned authority, a notary public for said state and county, hereby certify that Cecil O'Neal Campbell, Barbara Ann Campbell and Cecil O'Neal Campbell II, whose names are signed to the foregoing plat dedication and conveyance, and who are known to me, acknowledged before me on this day, that being informed of the contents of the said plat dedication and conveyance, that they did execute the same voluntarily on the day the same bears date. This the 29 day of October, 1991.

John Kieck
Notary Public

STATE OF ALABAMA
COUNTY OF COLBERT

Approved for recording by the North Alabama Regional Health Department, Colbert County, Alabama. This the 30 day of October, 1991.

Larry J. Channing
Environmentalist

STATE OF ALABAMA
COUNTY OF COLBERT

Approved for recording by the Colbert County Highway Department; said approval pertains to streets and drainage only. This the 31 day of October, 1991.

Thom
County Engineer

STATE OF ALABAMA
COUNTY OF COLBERT

I, W. Thomas Crosslin, Probate Judge, Colbert County, Alabama, hereby certify that the attached plat of STEEPLCHASE was duly filed in the office of the Judge of Probate of Colbert County, Alabama, in Plat Cabinet 84 Slide No. 24. This the 29 day of Oct, 1991.

W. Thomas Crosslin
W. Thomas Crosslin, Probate Judge
Colbert County, Alabama

OWNERS:
CECIL O'NEAL CAMPBELL
BARBARA ANN CAMPBELL
CECIL O'NEAL CAMPBELL II

STATE OF ALABAMA
COUNTY OF COLBERT

I hereby certify that I have designed the street and drainage improvements constructed in Rodeo Drive in STEEPLCHASE shown hereon, and that said improvements have been constructed in compliance with the approved plans and the requirements of the Colbert County Road Department. This the 30 day of October, 1991.

Don C. Price
Don C. Price, Jr., P.E.
Ata. Cert. No. 11615

John Kieck
Notary Public

STATE OF ALABAMA
COUNTY OF COLBERT

The undersigned, Cecil O'Neal Campbell, Barbara Ann Campbell and Cecil O'Neal Campbell II, owners of the property shown hereon and designated as STEEPLCHASE, hereby accept and expressly adopt said map and plat as an official record of the same, and in consideration of the benefits to accrue to us, our heirs, assigns and successors, we hereby grant and convey to Colbert County, Alabama, its successors and assigns, the following: The streets and easements shown hereon for electric, telephone, gas, water and sewer services, and any other utility or public service furnished or provided by said county, together with such privileges necessary for the installation and maintenance of such utilities or services over the respective rights of way including the right to cut and clear trees, or parts of trees or other objects that may injure or endanger overhead lines. This the 29 day of October, 1991.

Cecil O'Neal Campbell
Cecil O'Neal Campbell
Barbara Ann Campbell
Barbara Ann Campbell
Cecil O'Neal Campbell II
Cecil O'Neal Campbell II

Slide
Cabinet C / 24
Fiche 9120/220

ALEXANDER MAPS AND SURVEYS, INC.	
4008 HATCH BOULEVARD SHEFFIELD, ALABAMA, 35885	
Scale: 1" = 100'	Drawn: S.K.A.
Date: 10/1/91	Checked: W.P.
Dep. No.	