

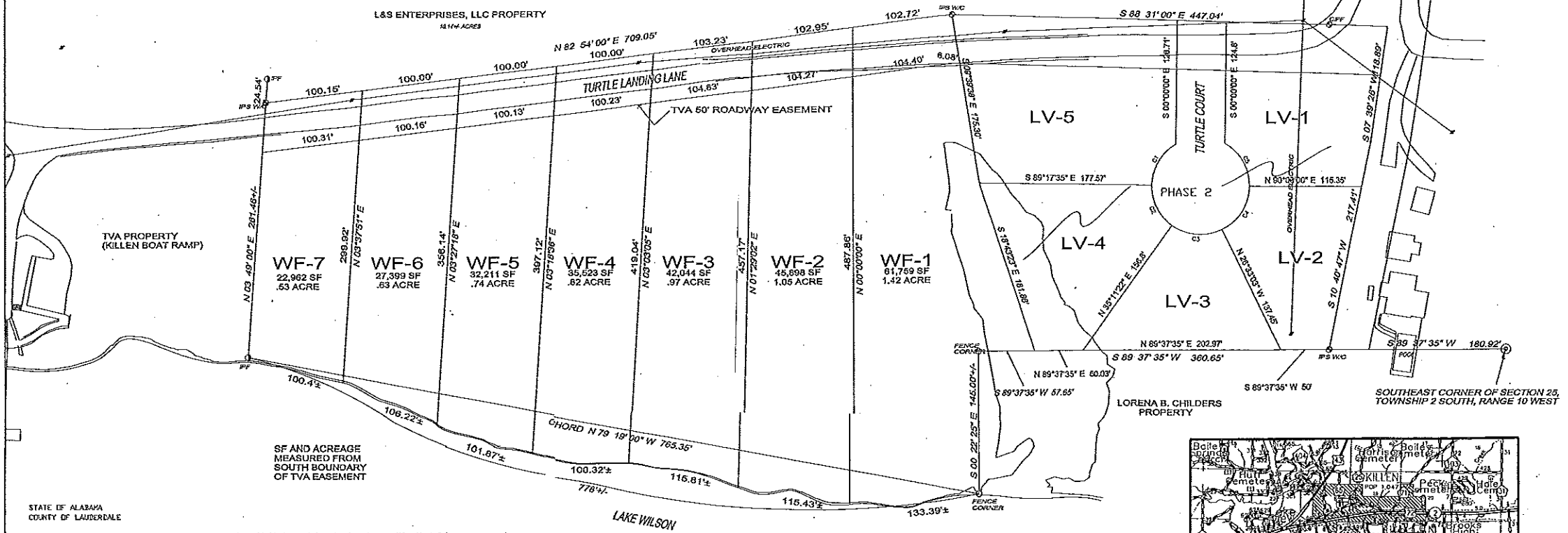
TURTLE LANDING AT LOCK SIX, PHASE 1

SECTIONS 25 AND 36, TOWNSHIP 2 SOUTH, RANGE 10 WEST

LAUDERDALE COUNTY, ALABAMA

L&S ENTERPRISES, LLC PROPERTY
141.14 ACRES

CURVE	RADIUS	ARC LENGTH	CHORD LENGTH	CHORD BEARING	BETA ANGLE
C1	50.00'	31.14'	49.83'	N 32°00'00" E	38°59'59"
C2	50.00'	41.45'	48.27'	N 27°03'07" E	55°31'03"
C3	50.00'	33.63'	31.21'	N 65°45'31" W	81°44'25"
C4	50.00'	55.37'	52.25'	S 31°12'24" E	83°05'57"
C5	50.00'	52.97'	50.83'	S 32°21'04" E	82°47'08"



STATE OF ALABAMA
COUNTY OF LAUDERDALE

I, Ronnie E. Vughton, a registered land surveyor in said State and County, hereby certify that I have surveyed that certain tract of land designated as Turtle Landing at Lock Six, Phase 1, on the annexed plat I have subdivided said lots showing the easements therein, giving the bearings and lengths of each line, as well as the size of the tract. I further certify that the annexed plat is a true and correct plat of said subdivision and shows the proper relationship to the U.S. Government Survey of Public Lands in the State of Alabama.

I hereby certify that all parts of this survey and drawing have been in accordance with the current requirements of the Standards of Practice for Surveying in the State of Alabama to the best of my knowledge, information and belief.

Given under my hand and seal, this the 1st day of December, 2009.

Ronnie E. Vughton
Ronnie E. Vughton
Alabama Registration No. 1578

STATE OF ALABAMA
COUNTY OF LAUDERDALE

We, Donald E. Lambert and Harry L. Smith, Member of L&S Enterprises, LLC, owner of the property platted on the annexed plat and designated as Turtle Landing at Lock Six, Phase 1, do hereby and accept and expressly adopt said plat as the official record of same, and in consideration of the respective benefits to accrue to us, our successors, and assigns, do hereby grant and convey to the City of Florence, Alabama, the County of Lauderdale its successors and assigns, the easements shown hereon for electric, telephone, water, gas, and sewer lines, and also ingress and egress, conveying the privileges necessary for the installation and maintenance of such utilities over the respective easements, including the right to cut and clear trees or parts thereof or other objects that may injure and endanger utility lines, given under my hand this the 1th day of October, 2009.

Donald E. Lambert *Harry L. Smith*
Member Member

STATE OF ALABAMA
COUNTY OF LAUDERDALE

I, the undersigned, a notary public in said State and County, hereby certify that Donald E. Lambert and Harry L. Smith, whose names are signed to the foregoing plat and who are known by me, acknowledged on this date that being informed of the contents of said plat, executed the same voluntarily on the day the same bears to be given under my hand and seal this the 1th day of October, 2009.

John C. [Signature]
Notary Public
MY COMMISSION EXPIRES 11-11-12

STATE OF ALABAMA
COUNTY OF LAUDERDALE

Approved for recording by the Planning Commission, Kilen, Alabama.
This the 2nd day of December, 2009.

Tommy [Signature]
Chairman Planning Commission

STATE OF ALABAMA
COUNTY OF LAUDERDALE

Approved for recording by the County Engineer, County of Lauderdale, Alabama.
This the 2nd day of April, 2009.

Ken [Signature]
County Engineer, Lauderdale County, Alabama

STATE OF ALABAMA
COUNTY OF LAUDERDALE

The Lots on this plat are subject to approval or deletion by the LAUDERDALE COUNTY HEALTH DEPARTMENT. The approvals may contain certain conditions pertaining to the onsite wastewater treatment systems that could restrict the use of the lots or obligate owners to special maintenance and reporting requirements. These conditions are on file with the said health department and are made a part of this plat as if set out hereon.

Chuck [Signature]
Environmentalist

STATE OF ALABAMA
COUNTY OF LAUDERDALE

The undersigned, as authorized by the Lauderdale County 911 Board, Alabama, hereby approved the atthn plat for the recording of same in the Probate Office of Lauderdale County, Alabama, this 2nd day of April, 2009.

894 [Signature]
ES11 Director

STATE OF ALABAMA
COUNTY OF LAUDERDALE

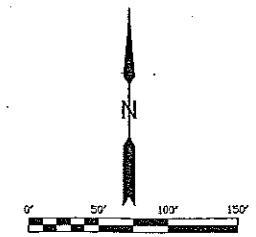
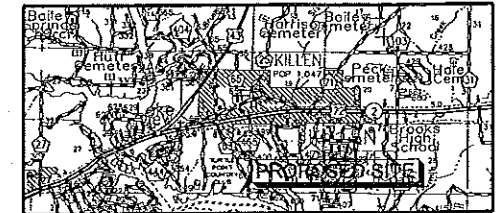
The undersigned, as authorized by the Lauderdale County Flood Management Department, hereby approved the atthn plat for the recording of same in the Probate Office of Lauderdale County, Alabama, this 2nd day of April, 2009.

Ken [Signature]
Lauderdale County Flood Management Director

STATE OF ALABAMA
COUNTY OF LAUDERDALE

I, Deway Mitchell, Probate Judge, Lauderdale County, Alabama, hereby certify that the attached plat of Turtle Landing at Lock Six, Phase 1, was duly filed in the Office of the Probate Judge of Lauderdale County, Alabama in Plat Book 7, Page 198. This the 23rd day of April, 2009.

Deway Mitchell
Probate Judge
Lauderdale County, Alabama



NOTE:
(1) ALL LOTS SUBJECT TO RESTRICTIVE COVENANTS FILED OF RECORD IN THE PROBATE COURT OF LAUDERDALE COUNTY, ALABAMA.

SUBDIVISION PLAT TURTLE LANDING AT LOCK SIX LAUDERDALE COUNTY, ALABAMA		
PRICE & RIDER ENGINEERING, INC. CIVIL ENGINEERS & LAND SURVEYORS 228 WEST TENNESSEE STREET FLORENCE, ALABAMA (206) 766-8974		
DRAWN BY	DATE	SHEET
CHECKED BY	SCALE	1
FILE NAME:	REVISIONS:	OF 1 SHEETS
09-203 FINAL PLATTING		

7/198