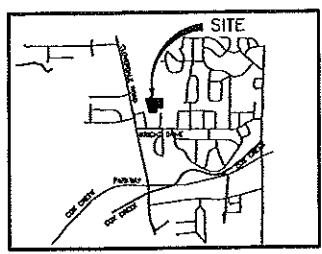


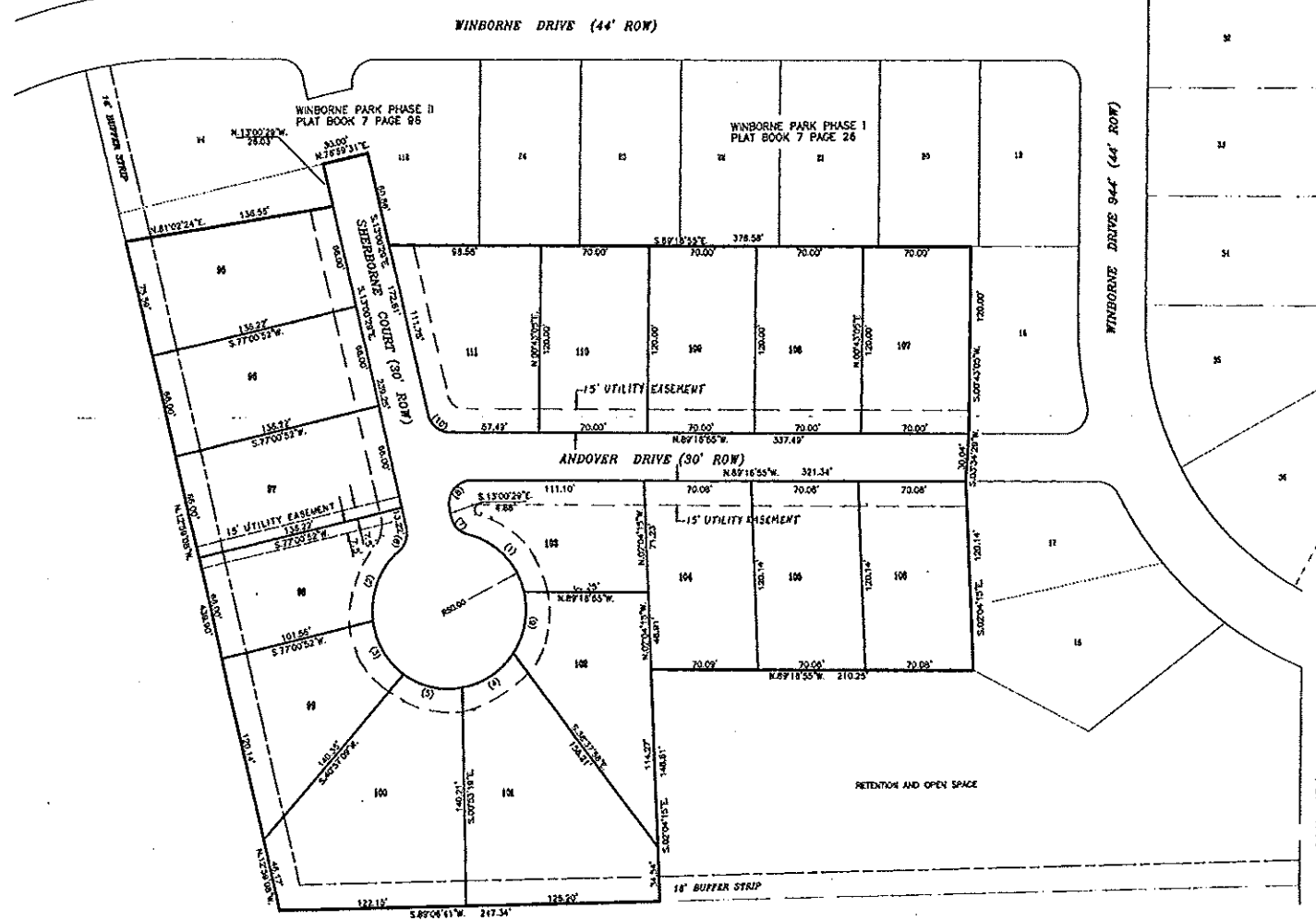
WINBORNE PARK PHASE IV
 LOTS 95 THRU 111
 FLORENCE, ALABAMA
 DARRELL RUMBLE DEVELOPER



WORTHY MAP NO SCALE

CURVE TABLE

NO.	RADIUS	DELTA	ARC	TANGENT	CHORD	CHORD BEARING
1	30.00	87.4311°	84.70'	30.45'	52.01'	S 84° 10' 58" E
2	30.00	86.5344°	49.85'	27.45'	41.54'	N 21° 33' 18" E
3	30.00	49.2143°	40.45'	21.41'	35.35'	N 30° 31' 18" W
4	30.00	49.2143°	40.45'	21.41'	35.35'	N 78° 28' 07" W
5	30.00	49.2143°	40.45'	21.41'	35.35'	N 10° 15' 17" W
6	30.00	49.2143°	40.45'	21.41'	35.35'	N 38° 51' 18" W
7	30.00	49.2143°	40.45'	21.41'	35.35'	N 67° 28' 07" W
8	30.00	49.2143°	40.45'	21.41'	35.35'	N 96° 04' 58" W
9	30.00	49.2143°	40.45'	21.41'	35.35'	N 124° 41' 49" W
10	30.00	49.2143°	40.45'	21.41'	35.35'	N 153° 18' 40" W
11	30.00	49.2143°	40.45'	21.41'	35.35'	N 181° 55' 31" W
12	30.00	49.2143°	40.45'	21.41'	35.35'	N 210° 32' 22" W
13	30.00	49.2143°	40.45'	21.41'	35.35'	N 239° 09' 13" W
14	30.00	49.2143°	40.45'	21.41'	35.35'	N 267° 46' 04" W
15	30.00	49.2143°	40.45'	21.41'	35.35'	N 296° 22' 55" W
16	30.00	49.2143°	40.45'	21.41'	35.35'	N 324° 59' 46" W
17	30.00	49.2143°	40.45'	21.41'	35.35'	N 353° 36' 37" W
18	30.00	49.2143°	40.45'	21.41'	35.35'	N 382° 13' 28" W
19	30.00	49.2143°	40.45'	21.41'	35.35'	N 410° 50' 19" W
20	30.00	49.2143°	40.45'	21.41'	35.35'	N 439° 27' 10" W
21	30.00	49.2143°	40.45'	21.41'	35.35'	N 468° 04' 01" W
22	30.00	49.2143°	40.45'	21.41'	35.35'	N 496° 40' 52" W
23	30.00	49.2143°	40.45'	21.41'	35.35'	N 525° 17' 43" W
24	30.00	49.2143°	40.45'	21.41'	35.35'	N 553° 54' 34" W
25	30.00	49.2143°	40.45'	21.41'	35.35'	N 582° 31' 25" W
26	30.00	49.2143°	40.45'	21.41'	35.35'	N 611° 08' 16" W
27	30.00	49.2143°	40.45'	21.41'	35.35'	N 639° 45' 07" W
28	30.00	49.2143°	40.45'	21.41'	35.35'	N 668° 21' 58" W
29	30.00	49.2143°	40.45'	21.41'	35.35'	N 696° 58' 49" W
30	30.00	49.2143°	40.45'	21.41'	35.35'	N 725° 35' 40" W
31	30.00	49.2143°	40.45'	21.41'	35.35'	N 754° 12' 31" W
32	30.00	49.2143°	40.45'	21.41'	35.35'	N 782° 49' 22" W
33	30.00	49.2143°	40.45'	21.41'	35.35'	N 811° 26' 13" W
34	30.00	49.2143°	40.45'	21.41'	35.35'	N 839° 03' 04" W
35	30.00	49.2143°	40.45'	21.41'	35.35'	N 867° 39' 55" W
36	30.00	49.2143°	40.45'	21.41'	35.35'	N 896° 16' 46" W
37	30.00	49.2143°	40.45'	21.41'	35.35'	N 924° 53' 37" W
38	30.00	49.2143°	40.45'	21.41'	35.35'	N 953° 30' 28" W
39	30.00	49.2143°	40.45'	21.41'	35.35'	N 981° 07' 19" W
40	30.00	49.2143°	40.45'	21.41'	35.35'	N 1009° 44' 10" W
41	30.00	49.2143°	40.45'	21.41'	35.35'	N 1038° 21' 01" W
42	30.00	49.2143°	40.45'	21.41'	35.35'	N 1066° 57' 52" W
43	30.00	49.2143°	40.45'	21.41'	35.35'	N 1095° 34' 43" W
44	30.00	49.2143°	40.45'	21.41'	35.35'	N 1124° 11' 34" W
45	30.00	49.2143°	40.45'	21.41'	35.35'	N 1152° 48' 25" W
46	30.00	49.2143°	40.45'	21.41'	35.35'	N 1181° 25' 16" W
47	30.00	49.2143°	40.45'	21.41'	35.35'	N 1209° 02' 07" W
48	30.00	49.2143°	40.45'	21.41'	35.35'	N 1237° 38' 58" W
49	30.00	49.2143°	40.45'	21.41'	35.35'	N 1266° 15' 49" W
50	30.00	49.2143°	40.45'	21.41'	35.35'	N 1294° 52' 40" W
51	30.00	49.2143°	40.45'	21.41'	35.35'	N 1323° 29' 31" W
52	30.00	49.2143°	40.45'	21.41'	35.35'	N 1352° 06' 22" W
53	30.00	49.2143°	40.45'	21.41'	35.35'	N 1380° 43' 13" W
54	30.00	49.2143°	40.45'	21.41'	35.35'	N 1409° 20' 04" W
55	30.00	49.2143°	40.45'	21.41'	35.35'	N 1437° 56' 55" W
56	30.00	49.2143°	40.45'	21.41'	35.35'	N 1466° 33' 46" W
57	30.00	49.2143°	40.45'	21.41'	35.35'	N 1495° 10' 37" W
58	30.00	49.2143°	40.45'	21.41'	35.35'	N 1523° 47' 28" W
59	30.00	49.2143°	40.45'	21.41'	35.35'	N 1552° 24' 19" W
60	30.00	49.2143°	40.45'	21.41'	35.35'	N 1581° 01' 10" W
61	30.00	49.2143°	40.45'	21.41'	35.35'	N 1609° 38' 01" W
62	30.00	49.2143°	40.45'	21.41'	35.35'	N 1638° 14' 52" W
63	30.00	49.2143°	40.45'	21.41'	35.35'	N 1666° 51' 43" W
64	30.00	49.2143°	40.45'	21.41'	35.35'	N 1695° 28' 34" W
65	30.00	49.2143°	40.45'	21.41'	35.35'	N 1724° 05' 25" W
66	30.00	49.2143°	40.45'	21.41'	35.35'	N 1752° 42' 16" W
67	30.00	49.2143°	40.45'	21.41'	35.35'	N 1781° 19' 07" W
68	30.00	49.2143°	40.45'	21.41'	35.35'	N 1809° 55' 58" W
69	30.00	49.2143°	40.45'	21.41'	35.35'	N 1838° 32' 49" W
70	30.00	49.2143°	40.45'	21.41'	35.35'	N 1867° 09' 40" W
71	30.00	49.2143°	40.45'	21.41'	35.35'	N 1895° 46' 31" W
72	30.00	49.2143°	40.45'	21.41'	35.35'	N 1924° 23' 22" W
73	30.00	49.2143°	40.45'	21.41'	35.35'	N 1953° 00' 13" W
74	30.00	49.2143°	40.45'	21.41'	35.35'	N 1981° 37' 04" W
75	30.00	49.2143°	40.45'	21.41'	35.35'	N 2010° 13' 55" W
76	30.00	49.2143°	40.45'	21.41'	35.35'	N 2038° 50' 46" W
77	30.00	49.2143°	40.45'	21.41'	35.35'	N 2067° 27' 37" W
78	30.00	49.2143°	40.45'	21.41'	35.35'	N 2096° 04' 28" W
79	30.00	49.2143°	40.45'	21.41'	35.35'	N 2124° 41' 19" W
80	30.00	49.2143°	40.45'	21.41'	35.35'	N 2153° 18' 10" W
81	30.00	49.2143°	40.45'	21.41'	35.35'	N 2181° 55' 01" W
82	30.00	49.2143°	40.45'	21.41'	35.35'	N 2210° 31' 52" W
83	30.00	49.2143°	40.45'	21.41'	35.35'	N 2239° 08' 43" W
84	30.00	49.2143°	40.45'	21.41'	35.35'	N 2267° 45' 34" W
85	30.00	49.2143°	40.45'	21.41'	35.35'	N 2296° 22' 25" W
86	30.00	49.2143°	40.45'	21.41'	35.35'	N 2324° 59' 16" W
87	30.00	49.2143°	40.45'	21.41'	35.35'	N 2353° 36' 07" W
88	30.00	49.2143°	40.45'	21.41'	35.35'	N 2382° 12' 58" W
89	30.00	49.2143°	40.45'	21.41'	35.35'	N 2410° 49' 49" W
90	30.00	49.2143°	40.45'	21.41'	35.35'	N 2439° 26' 40" W
91	30.00	49.2143°	40.45'	21.41'	35.35'	N 2468° 03' 31" W
92	30.00	49.2143°	40.45'	21.41'	35.35'	N 2496° 40' 22" W
93	30.00	49.2143°	40.45'	21.41'	35.35'	N 2525° 17' 13" W
94	30.00	49.2143°	40.45'	21.41'	35.35'	N 2553° 54' 04" W
95	30.00	49.2143°	40.45'	21.41'	35.35'	N 2582° 30' 55" W
96	30.00	49.2143°	40.45'	21.41'	35.35'	N 2611° 07' 46" W
97	30.00	49.2143°	40.45'	21.41'	35.35'	N 2639° 44' 37" W
98	30.00	49.2143°	40.45'	21.41'	35.35'	N 2668° 21' 28" W
99	30.00	49.2143°	40.45'	21.41'	35.35'	N 2696° 58' 19" W
100	30.00	49.2143°	40.45'	21.41'	35.35'	N 2725° 35' 10" W
101	30.00	49.2143°	40.45'	21.41'	35.35'	N 2754° 12' 01" W
102	30.00	49.2143°	40.45'	21.41'	35.35'	N 2782° 48' 52" W
103	30.00	49.2143°	40.45'	21.41'	35.35'	N 2811° 25' 43" W
104	30.00	49.2143°	40.45'	21.41'	35.35'	N 2839° 02' 34" W
105	30.00	49.2143°	40.45'	21.41'	35.35'	N 2867° 39' 25" W
106	30.00	49.2143°	40.45'	21.41'	35.35'	N 2896° 16' 16" W
107	30.00	49.2143°	40.45'	21.41'	35.35'	N 2924° 53' 07" W
108	30.00	49.2143°	40.45'	21.41'	35.35'	N 2953° 29' 58" W
109	30.00	49.2143°	40.45'	21.41'	35.35'	N 2982° 06' 49" W
110	30.00	49.2143°	40.45'	21.41'	35.35'	N 3010° 43' 40" W
111	30.00	49.2143°	40.45'	21.41'	35.35'	N 3039° 20' 31" W



THE RELATIVE ERROR OF CLOSURE OF THIS SURVEY IS LESS THAN 1 IN 10,000

NOTE: 15' UTILITY EASEMENTS ALONG AND ADJACENT TO ANDOVER DRIVE AND SHERBORNE COURT

STATE OF ALABAMA
 COUNTY OF LAUDERDALE

I, BRY RIDER, a registered land surveyor in said State and County, hereby certify that I have surveyed that certain tract of land designated as WINBORNE PARK PHASE IV, on the annexed plat, I have subdivided said lots showing the acreage therein, giving the bearings and lengths of each line, as well as the size of the tract. I further certify that the annexed plat is a true and correct plat of said subdivision and shows the proper relationship to the U.S. Government Survey of Public Lands in the State of Alabama.

I hereby certify that all parts of this survey and drawing have been completed in accordance with the current requirements of the Standards of Practice for Surveying in the State of Alabama to the best of my knowledge, information and belief.

Given under my hand and seal, this the 27 day of October, 2008.

[Signature]
 BRY RIDER
 Alabama Professional No. 14050-S

STATE OF ALABAMA
 COUNTY OF LAUDERDALE

I, Darrell G. Rumble, Vice President of Millennium Builders, Inc., owner of the property plotted on the annexed plat and designated as WINBORNE PARK PHASE IV, do hereby accept and expressly adopt said plat as the official record of same, and in consideration of the respective benefits to come to us, our successors, and assigns, do hereby grant and convey to the City of Florence, Alabama, the County of Lauderdale its successors and assigns, the easements shown hereon for electric, telephone, water, gas and sewer lines, and also ingress and egress, conveying the privileges necessary for the installation and maintenance of such utilities over the respective easements, including the right to cut and clear trees or parts thereof or other objects that may injure or encumber said lines.

Given under my hand this the 30 day of October, 2008.

[Signature]
 Darrell G. Rumble, Vice President

STATE OF ALABAMA
 COUNTY OF LAUDERDALE

I, the undersigned, a notary public in said State and County, hereby certify that Darrell G. Rumble, whose name is signed to the foregoing plat and who is known by me, acknowledged on this date that being informed of the contents of said plat, executed the same voluntarily on the day the same were date.

Given under my hand and seal this the 30 day of October, 2008.

[Signature]
 Notary Public
 My Comm. Expires Dec 27, 2009

STATE OF ALABAMA
 COUNTY OF LAUDERDALE

Approved for recording by the City Engineer, City of Florence, Alabama. This the 27 day of October, 2008.

[Signature]
 City Engineer City of Florence, AL

STATE OF ALABAMA
 COUNTY OF LAUDERDALE

Approved for recording by the Planning Commission, City of Florence, Alabama. This the 28 day of October, 2008.

[Signature]
 Chairman Planning Commission

STATE OF ALABAMA
 COUNTY OF LAUDERDALE

Approved for recording by the County Engineer, County of Lauderdale, Alabama. This the 27 day of October, 2008.

[Signature]
 County Engineer, Lauderdale County, AL

STATE OF ALABAMA
 COUNTY OF LAUDERDALE

I, Dewey Mitchell, Probate Judge, Lauderdale County, Alabama, hereby certify that the attached plat of WINBORNE PARK PHASE IV was duly filed in the Office of the Judge of Probate of Lauderdale County, Alabama in plat Book 126 Page 126. This the 27 day of October, 2008.

[Signature]
 Dewey Mitchell, Probate Judge,
 Lauderdale County, AL

WINBORNE PARK PHASE IV
 LOTS 95 THRU 111
 FLORENCE, ALABAMA

PRICE & RIDER ENGINEERING, INC.
 CIVIL ENGINEERS & LAND SURVEYORS
 228 WEST TENNESSEE STREET FLORENCE, ALABAMA
 (858) 766-8974

DRAWN BY	DMR
----------	-----