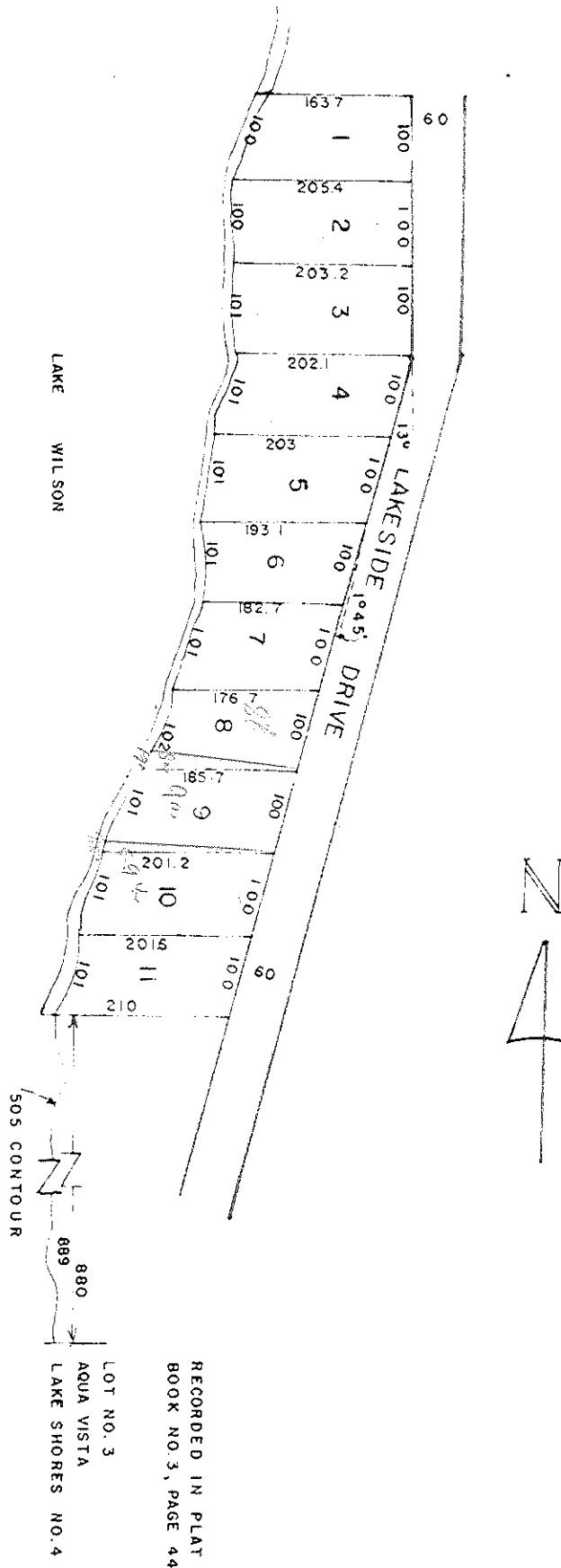


AQUA VISTA LAKE SHORES SUBDIVISION NO. SEVEN



Plat showing, at reduced scale, AQUA VISTA LAKE SHORES SUBDIVISION NO. SEVEN, according to the plat thereof as recorded in the Office of the Judge of Probate of Lauderdale County, Alabama, in Plat Book 3, at Page 103.