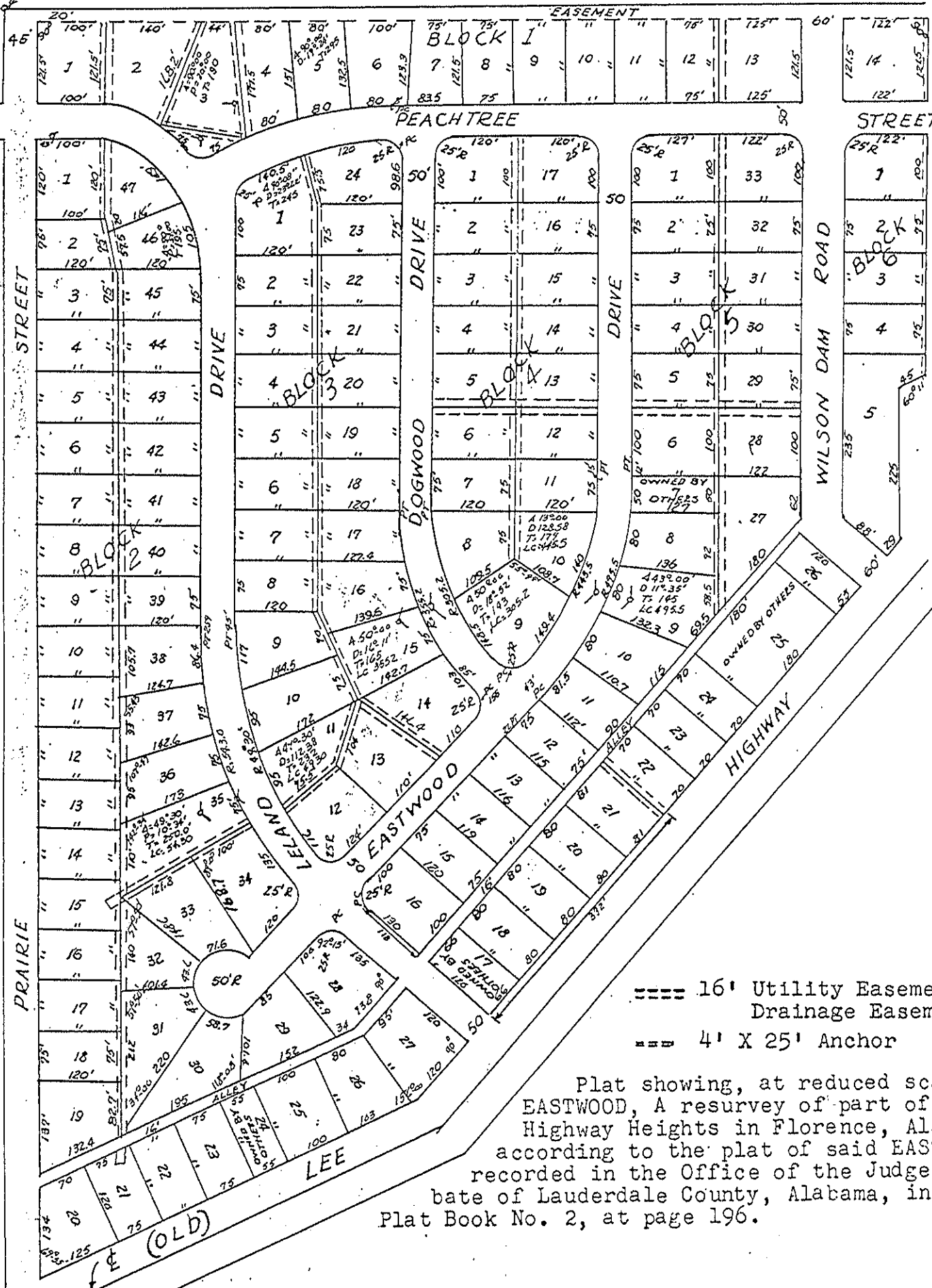


N.W. CORNER OF SW 1/4 OF
S. N.E. 1/4 OF SEC. 6, TP. 3, R. 10, W. 31 1/2
R.W. 6.



==== 16' Utility Easement & Drainage Easement
 == 4' X 25' Anchor

Plat showing, at reduced scale
 EASTWOOD, A resurvey of part of Lee
 Highway Heights in Florence, Alabama,
 according to the plat of said EASTWOOD
 recorded in the Office of the Judge of Pro-
 bate of Lauderdale County, Alabama, in New
 Plat Book No. 2, at page 196.