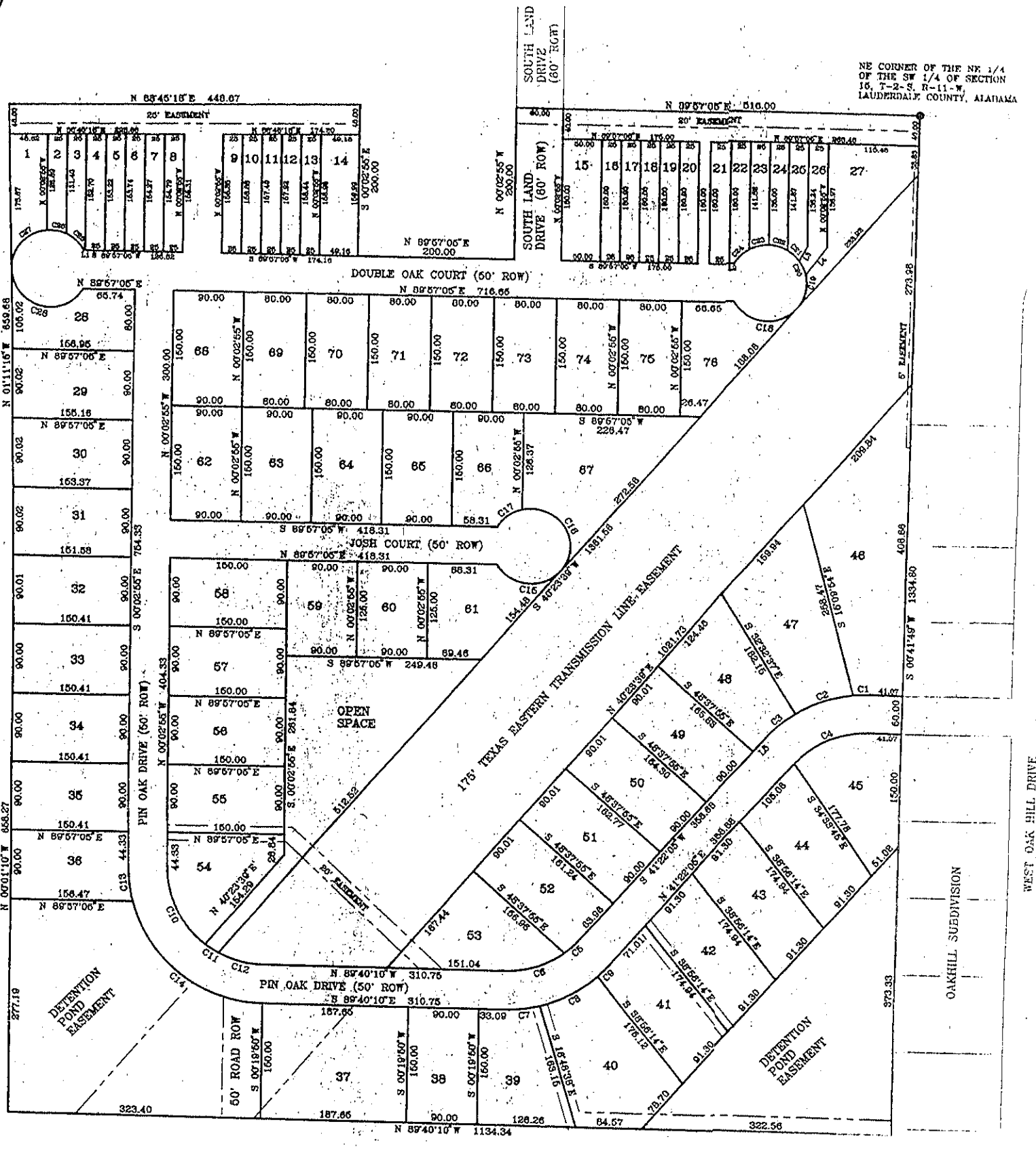




NE CORNER OF THE NW 1/4
OF THE SW 1/4 OF SECTION
16, T-2-S, R-11-W,
LAUDERDALE COUNTY, ALABAMA



WILKES PARK SUBDIVISION

OAKHILL SUBDIVISION

WEST OAK HILL DRIVE

OAK PLACE
Plat Book 6, Page 314