

RE-SURVEY OF CEDAR RIDGE

PLAT BOOK 7 PAGE 141
LAUDERDALE COUNTY, ALABAMA
DEVELOPER: SOUTHERN PROPERTIES, LLC

SURVEYOR'S CERTIFICATE AND DESCRIPTION OF LAND PLATTED

I, Ronnie E. Wighton, a registered land surveyor in said State and County, hereby certify that I have surveyed that certain tract of land designated as RE-SURVEY OF CEDAR RIDGE, on the annexed plat I have subdivided said lots showing the easements therein, giving the bearings and lengths of each line, as well as the size of the tract. I further certify that the annexed plat is a true and correct plat of said subdivision and shows the proper relationship to the U.S. Government Survey of Public Lands in the State of Alabama.
I hereby certify that all parts of this survey and drawing have been completed in accordance with the current requirements of the Standards of Practice for Surveying by the State of Alabama to the best of my knowledge, information and belief.
Given under my hand and seal, this 23rd day of May, 2008.
Ronnie E. Wighton, L.S.
Alabama Registration No. 15918

DEDICATION

We, the undersigned as owners of the property platted on the annexed plat and designated as RE-SURVEY OF CEDAR RIDGE, do hereby except and expressly adopt said plat as the official record of same, and in consideration of the respective benefits to accrue to us, our successors and assigns, do hereby grant and convey to the City of Florence, Alabama, the County of Lauderdale its successors and assigns, the easements shown hereon for electric, telephone, water, gas and sewer lines, and also ingress and egress, conveying the privileges necessary for the installation and maintenance of such utilities over the respective easements, including the right to cut and clear trees or parts thereof or other objects that may injure or endanger utility lines.
Given under our hand and seal, this 23rd day of May, 2008.

Wade Gichrist
Wade Gichrist
William Powell
William Powell
Joseph White
Joseph White
Josh Willygham
Josh Willygham
Ralph Wilson
Ralph Wilson
Goodloe Price
Goodloe Price
Kenneth Anderson
Kenneth Anderson
Rodney Hubbard
Rodney Hubbard
Michael Bishop
Michael Bishop
Greg Tyan
Greg Tyan
John F. Backidge
John F. Backidge
Karla French
Karla French

Jerold Smith
SHOULD HOME BUILDERS ASSOCIATION
Jerold Smith, President

ACKNOWLEDGMENT

I, the undersigned, a notary public in said State and County, hereby certify that Wade Gichrist, William Powell, Martell Powell, Joseph White, Josh Willygham, Ralph Wilson, Goodloe Price, Michael Bishop, Kenneth Anderson, Rodney Hubbard, Buddy Brooks, Greg Tyan, John F. Backidge, Karla French, and Jerold Smith whose names are signed to the foregoing plat and who are known by me, acknowledged on this date that being informed of the contents of said plat, executed the same voluntarily on the day the same bears date.
Given under my hand and seal this 23rd day of May, 2008.
Notary Public

STATE OF ALABAMA

CITY OF FLORENCE, ALABAMA
Approved for recording by the City Engineer, City of Florence, Alabama. This the 22nd day of July, 2008.
City Engineer City of Florence, AL.

STATE OF ALABAMA

CITY OF FLORENCE, ALABAMA
Approved for recording by the Planning Commission, City of Florence, Alabama.
This the 23rd day of July, 2008.
Chairman Planning Commission

STATE OF ALABAMA

COUNTY OF LAUDERDALE
CERTIFICATE OF APPROVAL BY THE ES11 BOARD
The undersigned, as authorized by the Lauderdale County 311 Board, Alabama, hereby approved the within plat for the recording of same in the Probate Office of Lauderdale County, Alabama, this 23rd day of July, 2008.

STATE OF ALABAMA

COUNTY OF LAUDERDALE
CERTIFICATE OF APPROVAL BY THE LAUDERDALE COUNTY FLOOD MANAGEMENT DEPARTMENT
The undersigned, as authorized by the Lauderdale County Flood Management Department, Alabama, hereby approved the within plat for the recording of same in the Probate Office of Lauderdale County, Alabama, this 23rd day of July, 2008.

STATE OF ALABAMA

COUNTY OF LAUDERDALE
Lauderdale County Flood Management Director
Approved for recording by the County Engineer, County of Lauderdale, Alabama.
This the 23rd day of July, 2008.
County Engineer, Lauderdale County, AL.

STATE OF ALABAMA

COUNTY OF LAUDERDALE
Approved for recording by the County Engineer, County of Lauderdale, Alabama.
This the 23rd day of July, 2008.
County Engineer, Lauderdale County, AL.

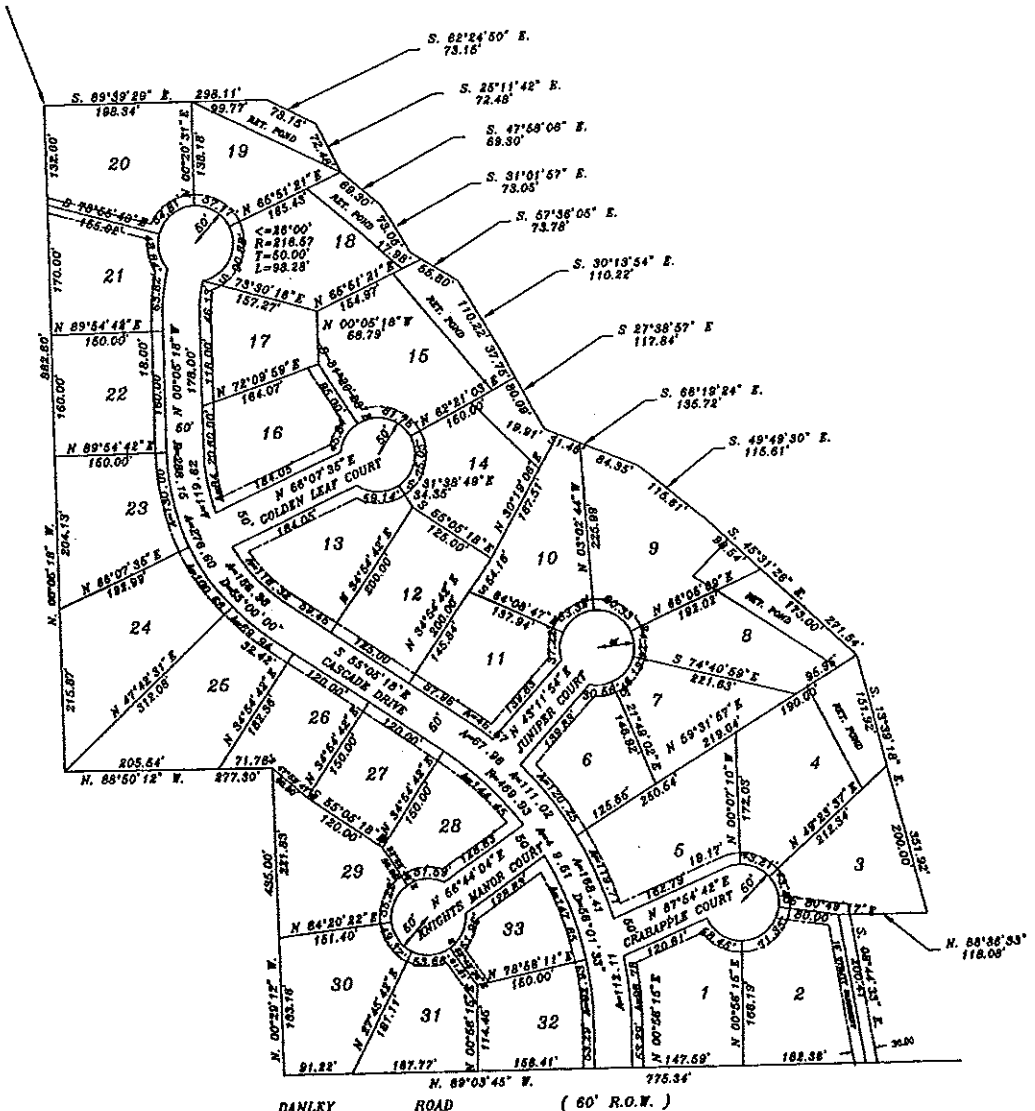
STATE OF ALABAMA

COUNTY OF LAUDERDALE
Approved for recording by the County Engineer, County of Lauderdale, Alabama.
This the 23rd day of July, 2008.
County Engineer, Lauderdale County, AL.

STATE OF ALABAMA

COUNTY OF LAUDERDALE
Approved for recording by the County Engineer, County of Lauderdale, Alabama.
This the 23rd day of July, 2008.
County Engineer, Lauderdale County, AL.

NORTHWEST CORNER OF THE SOUTHWEST 1/4
OF THE SOUTHEAST 1/4, SECTION 10,
T-2-S, R-11-W, LAUDERDALE COUNTY, ALABAMA



NOTE: 1" UTILITY EASEMENTS
ALONG AND ADJACENT TO ALL
PUBLIC RIGHTS-OF-WAY ARE AS SHOWN
ALL FIELD LINES ARE IN A 90°
TURNS ARE 1000 GALLON



PRICE & RIDER ENGINEERING, INC.
CIVIL ENGINEERS & LAND SURVEYORS
1000 GOLF COURSE STREET FLORENCE, ALABAMA

