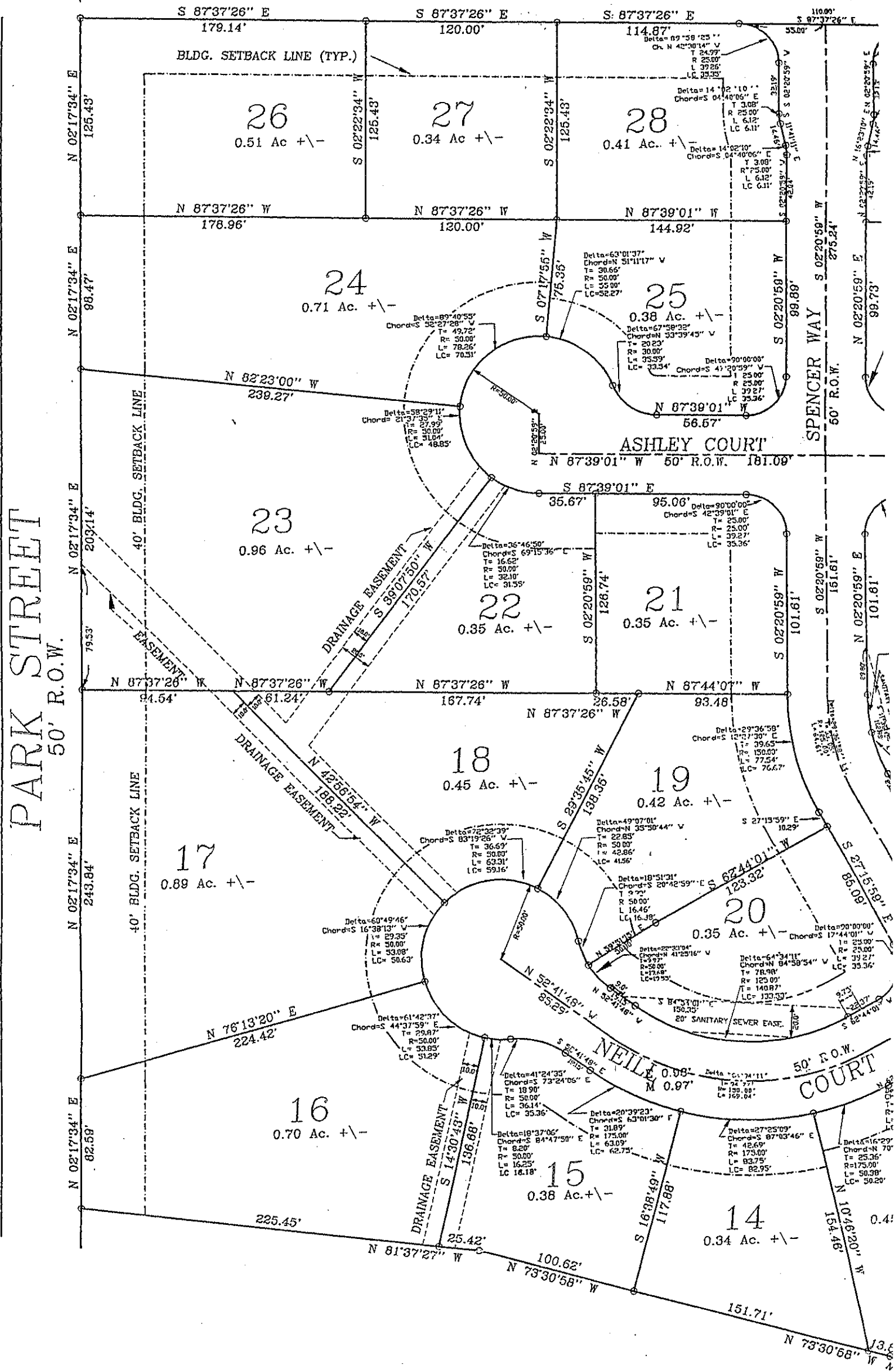
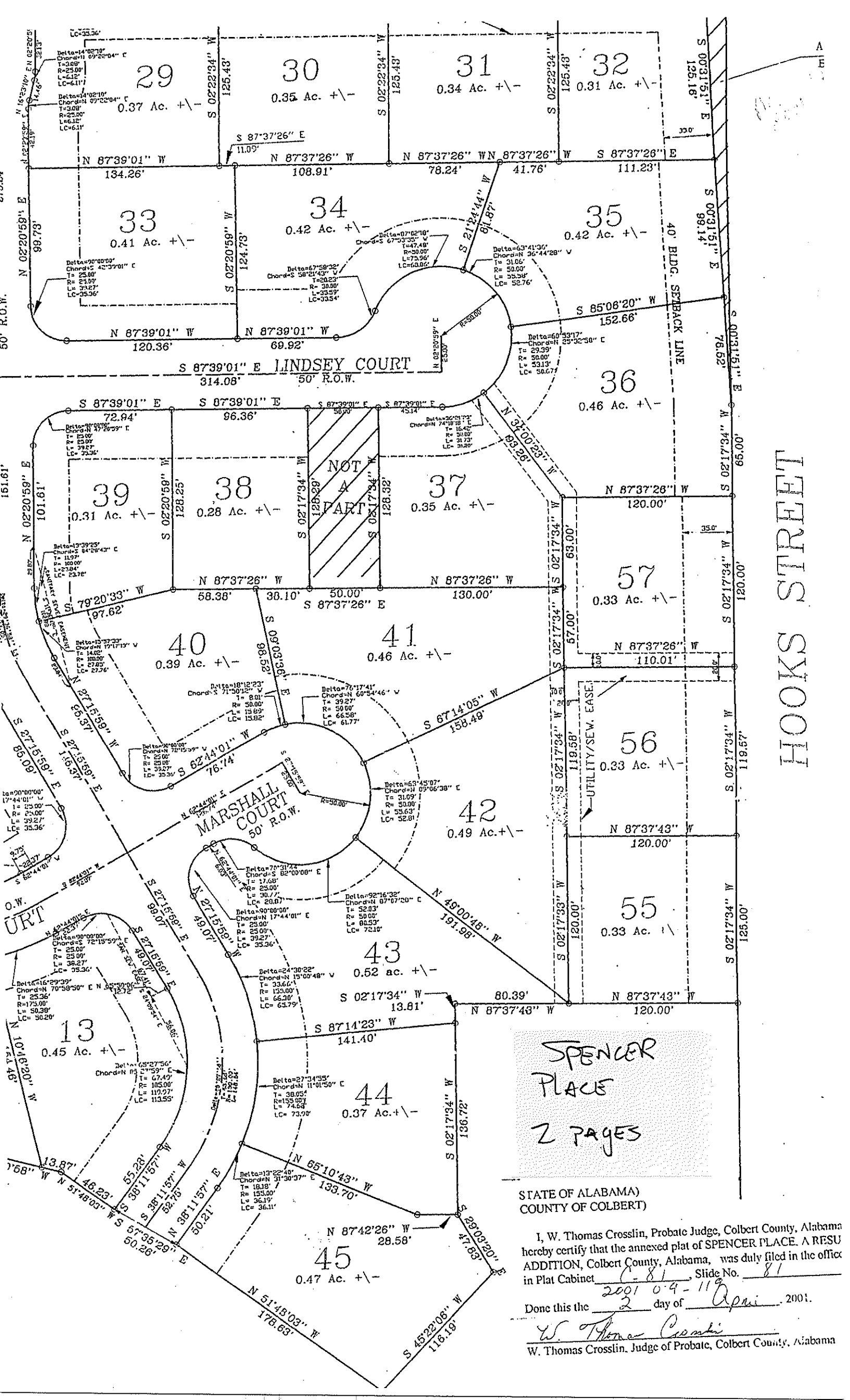


# SOUTH CC





HOOKS STREET

STATE OF ALABAMA)  
COUNTY OF COLBERT)

I, W. Thomas Crosslin, Probate Judge, Colbert County, Alabama hereby certify that the annexed plat of SPENCER PLACE. A RESU ADDITION, Colbert County, Alabama, was duly filed in the office in Plat Cabinet C-81, Slide No. 81

Done this the 2 day of April, 2001.

W. Thomas Crosslin  
W. Thomas Crosslin, Judge of Probate, Colbert County, Alabama